



CENSUS OF PUNJAB
GOVERNMENT AND SEMI-GOVERNMENT
EMPLOYEES
AS ON
31-3-2016

ISSUED BY:-
ECONOMIC ADVISER, TO GOVERNMENT PUNJAB
CHANDIGARH

PREFACE



The data relating to number of Government Employees in the state is being collected regularly on annual basis which includes the number of employees working in Government, Semi-Government and Aided Institutions as well as Boards, Corporations and Local Bodies, etc.

In the present report, the data in respect of Government employees is being given under different categories such as group A, B, C & D, work charged, contingency paid and on contract basis, department-wise and district-wise, according to pay scales as well as male/female. The Number of Government, Semi-Government and Aided Institutions employees belonging to scheduled castes, backward classes, ex-servicemen, wards of freedom fighters, handicapped and employed on compassionate ground in position as on 31.3.2016 are also being given separately.

As on 31.3.2016, the employees for Government sector, Semi-Government and Aided Institutions are 305800, 87498 & 7532 respectively. Out of total 400830 employees, 110285 (27.51%) are female employees.

I acknowledge the co-operation provided by all Heads of Departments, Boards, Corporations, Local Bodies and Deputy Economic and Statistical Advisers, in the districts for furnishing the desired information. This report has been prepared under the guidance and supervision of Smt. Muiry Bhatia, Research Officer and under over all guidance and supervision of Smt. Kuldeep Kaur, Joint Director.

As there is always scope for improvement, I would sincerely welcome suggestions for improvement.

Place: Chandigarh
Dated:

Mohan Lal Sharma
Economic Adviser

CONTENTS

EXECUTIVE SUMMARY

I-VIII

PART - A

Government Employees

		Page No
Table 1	Group-wise distribution of Government Employees as on 31st March, 2016	1
Box 1	Year wise No. of Government Employees.	2
Box 2	Employees in Government, Semi-Government and Aided Institutions in Punjab.	3
Table 2	Pay-scale and Group-wise Employees working at State Headquarter and at District level As on 31 st , March 2016.	4-5
Table 3	District wise /Group wise distribution of Government Employees.	6
Table 4	District wise/Department wise distribution of Punjab Government Employees as on 31 st , March 2016.	7-8
Box 3	Punjab Government Employees.	9
Table 5	Department-wise, Group-wise, and Sex-wise Distribution of Punjab Government Employees as on 31 st , March 2016.	10-11
Box 4(A)	Distribution of Government Employees in Districts and State Headquarter Chandigarh.	12
Box 4(B)	Distribution of Government Employees in Districts and State Headquarter.	13
Table 6	District-wise, Group-wise and Sex-wise Distribution of Punjab Government Employees as on 31 st , March 2016.	14
Box 5(A)	Reservation position in Punjab Government.	15
Box 5(B)	Reservation position in Punjab Government Departments.	16
Table 7	Department-wise, Group-wise distribution of Scheduled Castes, Backward Classes, Ex-Servicemen, Ward of Freedom fighters, Handicapped, and Compassionate Ground Employees as on 31 st March 2016.	17-22
Table 8	Distribution of SC's, BC's, Ex-servicemen, Wards of freedom Fighters, Handicapped and Compassionate ground Employees out of total posts filled in Punjab Government services as on 31 st March 2016.	23
Table 9	District-wise Number of Punjab Government Employees-Appointed, Retired, Pensioners during the year 2015-16 and likely to retire during 2016-17.	24

Box 6	Department-wise distribution of Government Employees	25
Table 10	Department-wise Number of Punjab Government Employees-Appointed, Retired during the year 2015-16 and Pensioners Likely to retire during 2016-17.	26-27
Box 7	Estimated Expenditure on salaries of Government Employees According to Pay-scales during the year 2015-16.	28
Table 11	Estimated Expenditure on Salaries of Government Employees According to Pay-Scales during the year 2015-16.	29-30

PART – B

Semi-Government Employees

Box 8	Distribution of Semi-Government Employees.	31
Table 1	Pay-scale wise No. of Semi-government Employees working in Boards , Corporations, Municipal,Corporations/Committees, Improvement Trusts, Zila Parishads, Market Committees and Panchayat Samities as on 31 st March 2016.	32-33
Box 9	Reservation position in Semi- Government Employees.	34
Table 2	Number of reserved category employees employed on Compassionate grounds working in Boards /Corporations, Municipal Corporations/Committees, Improvement Trusts/ Zila Parishads, Market Committees and Panchayat Samities .	35
Table 3	District wise No. of Semi-Government Employees working in Municipal Corporations/Committees as on 31 st March, 2016.	36
Table 4	District wise No. of Employees working in Improvement trusts. as on 31st March, 2016.	37
Table 5	District wise No. of Employees working in Zila Parishads. as on 31st March, 2016.	38
Table 6	District wise No. of Employees working in Market Committees as on 31st March, 2016.	39
Table 7	District wise No. of Employees working in Panchayat Samities as on 31st March, 2016.	40
Table 8	District wise No. of Semi-Government Employees working in Boards/Corporations as on 31 st March, 2016.	41

PART - C

Employees in Aided Institutions

Table 1	Pay Scale-wise Number of employees working in Aided Institutions, as on 31st March, 2016.	42
Box 10	Distribution of Employees in Aided Institutions, as on 31st March, 2016.	43
Table 2	District-wise Number of employees working in Aided Institutions, as on 31st March, 2016.	44

STRENGTH SUMMARY

The report on Census of Punjab Government and Semi-Government employees is prepared on an annual basis. The present report covers all the State Government employees (permanent, temporary, contingency paid, work-charged or on contract basis) as on 31st March, 2016.

Distribution of Government Employees

1. Total Number of Government employees increased from 304887 as on 31st March 2015 to 305800 as on 31st March, 2016.

Group-wise Distribution of Government Employees

2. The group wise total number of employees in the state government as on 31st March 2016 is shown in the table:

Category	Group-A	Group-B	Group-C	Group-D	Others	Total
Male	17251	34568	108681	36530	14982	212012
Female	12075	22352	36018	9173	14170	93788
Total	29326	56920	144699	45703	29152	305800

3. The number of Group- A officers has increased from 23323 as on 31st March 2015 to 29326 as on 31st March 2016 but it increased from the level of 23323 on 31.3.2015 due to change in classification of employees consequent upon issue of department of Personnel's letter which restored the previous classification into groups as per Punjab Civil Services (revised pay scales) rules, 2009.
4. District wise highest percentage of (12.09%) Group- A officers were posted in Gurdaspur and the lowest i.e. (0.71%) were posted at district Fazilka.
5. Highest percentage (57.36%) of Group- A officers were employed with Education Department followed by Health (14.43%) & Animal Husbandry (3.45%).
6. The total number of Group B employees in the state has shown a marked increase from 55852 as on 31st March 2015 to 56920 as on 31st March 2016 shows increase of i.e. 1.91%.

7. District wise highest number of Group B officers were posted at Amritsar (7724) and the lowest number (1081) at Hoshiarpur.
8. Highest percentage (51.68%) of Group B employees posted in Education Department.
9. The number of Group C employees has come down from 152558 to 144699 31st March 2015 to 31st March 2016.
10. District wise highest percentage of Group C employees i.e. (14.89%) were posted at Ludhiana whereas the lowest (1.22%) were posted at Fatehgarh Sahib.
11. Police Department employed highest percentage (41.71%) of the total Group C employees followed by the Education Department (26.69%).
12. The number of Group D employees recorded a decline from 47875 as on 31st March 2015 to 45703 as on 31st March 2016.
13. 95.09% of total Group D employees are working in Districts whereas 4.91% were posted at Chandigarh as on 31st March 2016.
14. Highest percentage of Group D employees 10.06% were posted at Ludhiana whereas the lowest 1.35% were working at Barnala.
15. Highest number of Group D employees posted at education department 19.60% followed by irrigation 18.18% and health 15.62%.
16. Contingency paid, work charged and Contract basis employees has increased from 25700 (on 31st March 2015) to 29152 (on 31st March 2016).
17. Out of 29152 contingency paid, work charged, contract basis and any other category of employees, 2.93% were working at Chandigarh and the remaining 97.07% were working in districts.

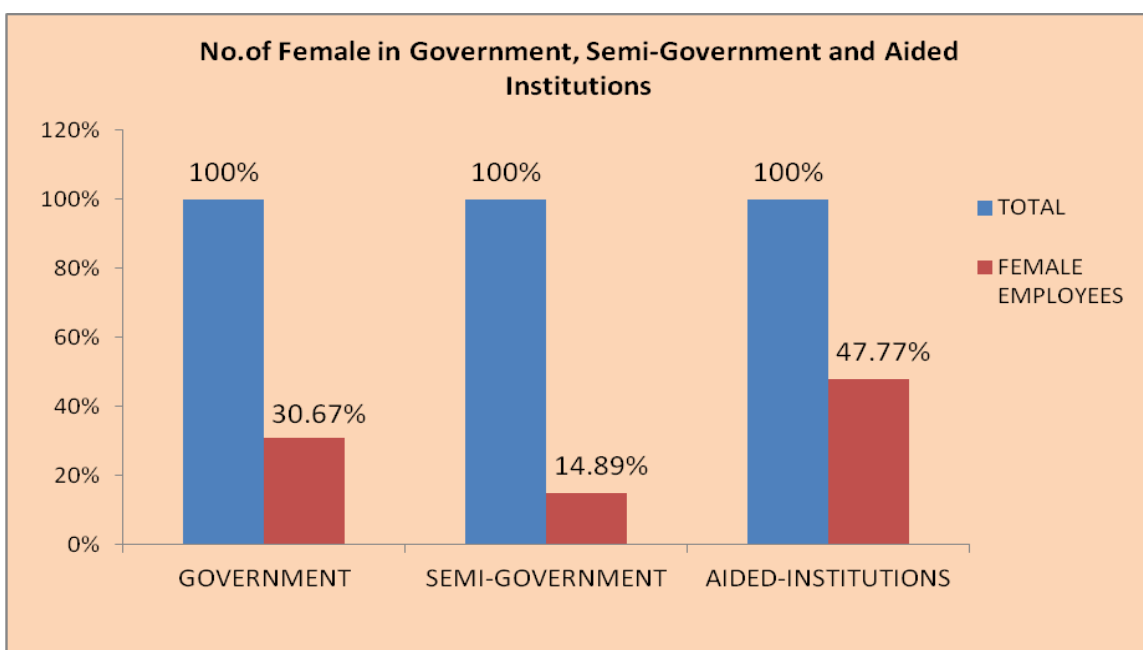
Category	State Headquarter (Chandigarh)	District	Total
Group-A	1979	27347	29326
Group-B	4148	52772	56920
Group-C	5122	139577	144699
Group-D	2242	43461	45703
Others	855	28297	29152
Total	14346	291454	305800

(In this table number of work charge are included in group C and D.)

18. Highest number of 2845 contingency paid, work charged, contract basis and any other category of employees were employed in Hoshiarpur District and the lowest 06 in Tarn Taran.
19. Highest percentage 28.63% of contingency paid, work charged, contract basis and any other category of employees are working at education department followed by department of Social Welfare & Welfare SCs & BCs 24.95%.

Participation of Women in Government Employment

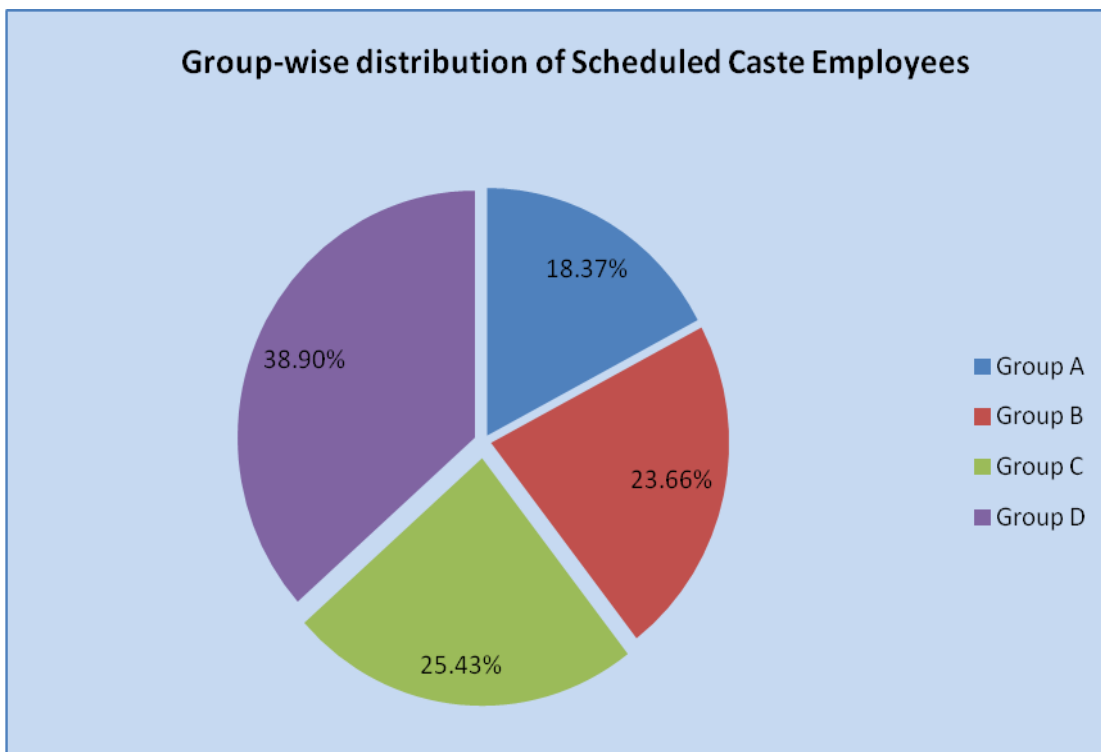
20. Out of total 305800 government employees less than half i.e. 93788 (30.67%) were female employees.
21. Out of the total 29326 Group A officers 12075 are female officers which accounts for 41.08% whereas out of 56920 group B officers 22352 are female officers which accounts for 39.27%.
22. Highest percentage of Group A & B female employees were employed with Education Department (31.34%, 26.95%) followed by Health Department (5.25%, 5.16%).
23. In group C & D, female accounts for 24.89% and 20.07% respectively.
24. Out of the total 14364 contingency paid employees, 46.95% were females.



Reservation Position in Government Employment

Category	Group-A	Group-B	Group-C	Group-D	Total
Scheduled Castes	5387	13465	36796	17777	73425
Backward Classes	2346	6643	21689	5987	36665
Others	842	2119	6697	3233	12891
Total	8575	22227	65182	26997	122981

25. Out of the total 277215 filled up posts of government employees 73425 (26.49%) belonged to scheduled castes. Group-wise Scheduled castes employees numbered 5387 (18.37%) in group-A, 13465 (23.66%) in group-B, 36796 (25.43%) in group-C and 17777(38.90%) in group-D. (Percentage derived from the total filled posts of the same group).



26. As on 31.3.2016 out of the total 277215 filled up posts of government employees, 36665 (13.23%) belonged to backward classes. Group-wise Number of these employees were 2346 (8.00%) in group-A, 6643 (11.67%) in group-B, 21689 (14.99%) in group-C and 5987 (13.10%) in group-D. (Percentage derived from the total filled posts of the same group).
27. Out of the total 277215 filled up posts of Government Employees, 3347 (1.21%) belonged to Ex-servicemen. The Group wise break up of Ex-Servicemen Government employees were 234 (0.80%) in Group A, 638 (1.12%) in Group B, 2041 (1.41%) in Group C and 434 (0.95%) in Group D. (Percentage derived from the total filled posts of the same group).
28. As on 31.3.2016 out of the total 277215 filled up posts of Government Employees, 704 (0.25%) belonged to Freedom Fighter category. Group wise distribution of such employees were 53 (0.18%) in Group A, 124 (0.22%) in

Group B, 349 (0.24%) in Group C, and 178 (0.39%) in Group D. *(Percentage derived from the total filled posts of the same group).*

29. As on 31.3.2016 out of the total 277215 filled up posts of Government Employees, 2753 (0.99%) were handicapped. Group wise break up of handicapped employees is 357 (1.22%) in Group A, 600 (1.05%) in Group B, 1159 (0.80%) in Group C, and 637 (1.39%) in Group D. *(Percentage derived from the total filled posts of the same group).*

30. Out of the total 277215 filled up posts of Government employees, 6087 (2.20%) employees belonged to compassionate ground category. Out of these 198 employees (0.68%) were in Group A, 757 (1.33%) in Group B, 3148 (2.18%) in Group C, and 1984 (4.34%) in Group D. *(Percentage derived from the total filled posts of the same group).*

Retirement Position of Government Employees.

32. During the year 2015-16, 4002 government employees were appointed and 4934 employees were retired from services after superannuation.

Expenditure on Government Employees

33. During the year 2015-16 the estimated annual expenditure on the salaries of Government employees were Rs. 1520.21 crores i.e. 0.41 lakhs per employee.

Distribution of Semi-Government Employees.

Category	Board / Corporations	Municipal Corporation/ Committees	Nagar Council	Nagar Panchayat	Education Board	Improvement Trusts	Zila Parishads	Market Committees	Panchayat Samities	Total
Male	49571	14616	3321	476	1141	438	468	2552	2060	74643
Female	5697	4186	1338	91	572	98	174	367	332	12855
Total	55268	18802	4659	567	1713	536	642	2919	2392	87498

34. There were 87498 semi- government employees were employed in the state. Highest 63.16% were employed in Boards and Corporations followed by 21.49% in Municipal corporations / committees, 3.33% Market committees, 2.63% Panchayat samitees, 5.33% Nagar Council, 1.96% Education Board, 0.73% Zila Parishads, 0.65% Nagar Panchayat and 0.61% Improvement trusts.
35. Out of the total 151026 sanctioned posts in Boards, Corporations / Local bodies 87498 (57.94%) posts were filled up.
36. In Boards/ Corporations numbers of employees 15790 of were working in the pay scale of 10300-34800+3200.
37. The highest number of employees 10370 of Municipal Committees/Corporations was working in the pay scale of 4900-10680+1650.
38. In improvement trust 237 numbers of employees working in the pay scale of 4900-10680+1650.
39. The highest No. of employees 169 of Zila Parishads was working in the pay scale of 4900-10680+1650.
40. The highest No. of employees 567 of Market Committees was working in the pay scale of 4900-10680+1650.
41. The highest No. of employees 1555 of Panchayat Samitis were working in the pay scale of 10300-34800+3200.

Position of Women in Semi-Government Employment

42. Out of 87498 employees 12855 female employees were employed in the semi-Government offices. Out of this the highest No. of Females 5697 were employed in Boards / Corporations followed by 4186 in Municipal

Corporations / Committees, 1338 in Nagar Council, 572 in Education Board, 367 in Market Committees, 332 in Panchayat Samitis, 174 in Zila Parishads, , 98 in Improvement Trusts and 91 Nagar Panchayat.

Reservation position of Semi- Government Employees

- 43.** Out of total 55268 employees of Boards / Corporations 22.40% belonged to Scheduled Castes, 11.05% Backward Classes, 0.33% Ex-Servicemen, and 0.20% Wards of Freedom Fighters.
- 44.** Out of total 18802 employees of Municipal Corporations / Committees 45.30% belonged to Scheduled Castes, 8.54% Backward Classes, 0.29% Ex-Servicemen, and 0.33% Wards of Freedom Fighters.
- 45.** Out of total 536 employees of Improvement Trusts 27.43% belonged to Scheduled Castes, 12.50% Backward Classes, and 0.75% Wards of Freedom Fighters.
- 46.** Out of total 642 employees of Zila Parishads 33.18% belonged to Scheduled Castes, 9.66% Backward Classes, 0.47% Ex-Servicemen, and 1.56% Wards of Freedom Fighters.
- 47.** Out of total 2919 employees of Market Committees 24.05% belonged to Scheduled Castes, 10.69% Backward Classes, 0.62% Ex-Servicemen, and 0.41% Wards of Freedom Fighters.
- 48.** Out of total 2392 employees of Panchayat Samities 19.69% belonged to Scheduled Castes, 10.12 Backward Classes, 1.30% Ex-Servicemen, and 0.50% Wards of Freedom Fighters.

Retirement Position of Semi-Government Employees

- 49.** Out of total 87498 filled up posts, 678 employees retired from Board/Corporations followed by 373 in Municipal corporations/committees, 195 in Market Committee, 150 in Nagar Council, 32 in Panchayat samities, 21 Improvement trusts 13 in Nagar Panchayat and 7 in Zila Parishads and 2 in Education Board.

Employees working in Aided Institutions of Punjab

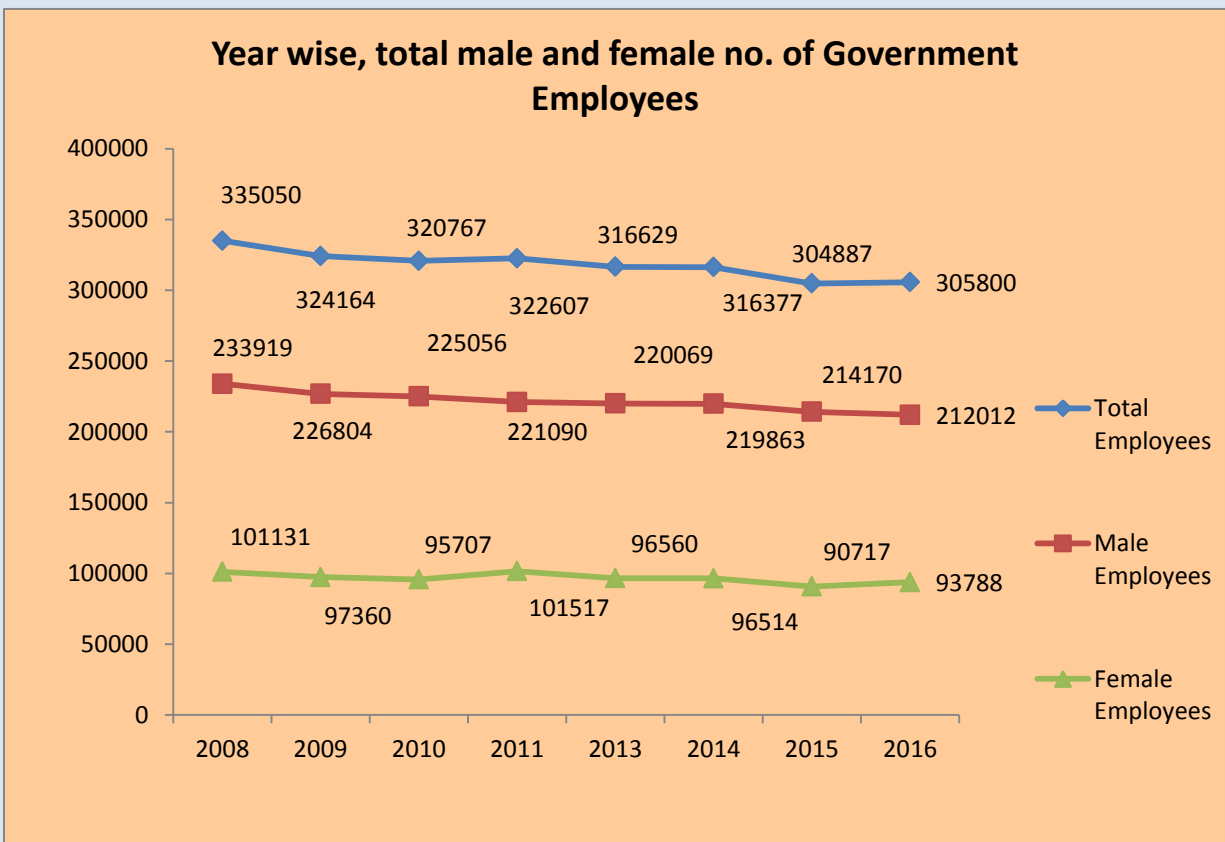
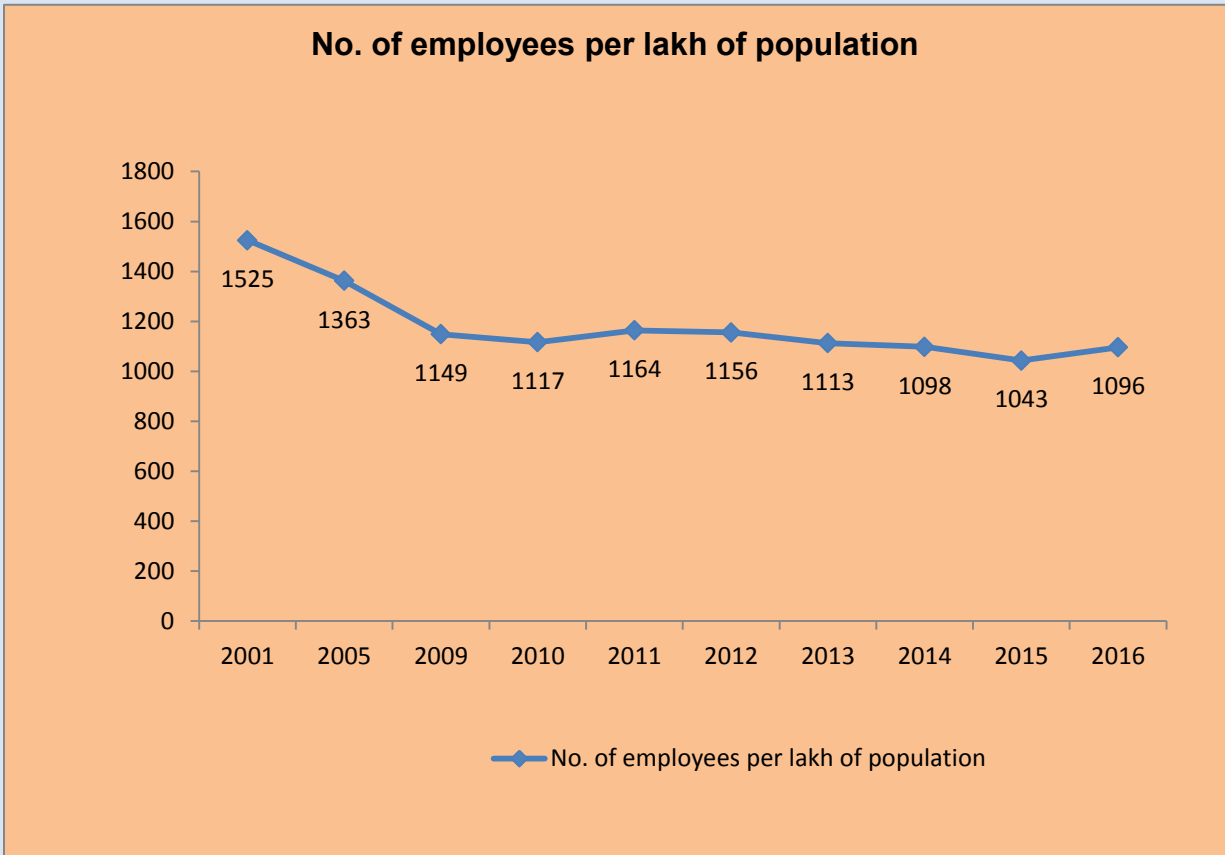
Category	Aided-Institutions
Male	3890
Female	3642
Total	7532

50. The total No. of employees in Aided Institutions was 7532. Out of this, 1187 (15.76%) employees belonged to Scheduled Castes, 722 (9.59%) to Backward Classes, 57 (0.77%) to Ex-servicemen, 7 (0.09%) to wards of Freedom Fighters, 59 (0.78%) to Handicapped, and 50 (0.66%) were employed on Compassionate grounds. 193 employees of Aided Institutions retired during the year 2015-16.

Table 1:- Group-wise distribution of Government Employees as on 31st March, 2016.

Year	Group A	Group B	Group C	Group D	Contingency paid, work charged and on contract basis	Total
1	2	3	4	5	6	7
2000	10275	4906	256105	65984	38178	375448
2001	11505	10892	247083	66939	35048	371467
2002	12534	12095	247940	68097	37711	378377
2003	13154	12078	246705	67673	34577	374187
2004	13189	12420	243161	67113	35898	371781
2005	12558	12471	236791	65437	30033	357290
2006	12248	12609	229620	63151	30162	347790
2007	11706	12650	221569	61931	37681	345537
2008	11296	12611	211161	61074	38908	335050
2009	10819	13161	204641	57508	38035	324164
2010	10768	20833	191432	56805	40923	320761
2011	10793	22156	188189	55531	45938	322607
2013	31108	46777	151776	50191	36777	316629
2014	32479	51039	145764	49691	37404	316377
2015	23323	55877	152392	47595	25700	304887
2016	29326	56920	144699	45703	29152	305800

BOX -1: Year wise No. of Government Employees



BOX -2: Employees in Government / Semi- Government and Aided Institutions in Punjab.

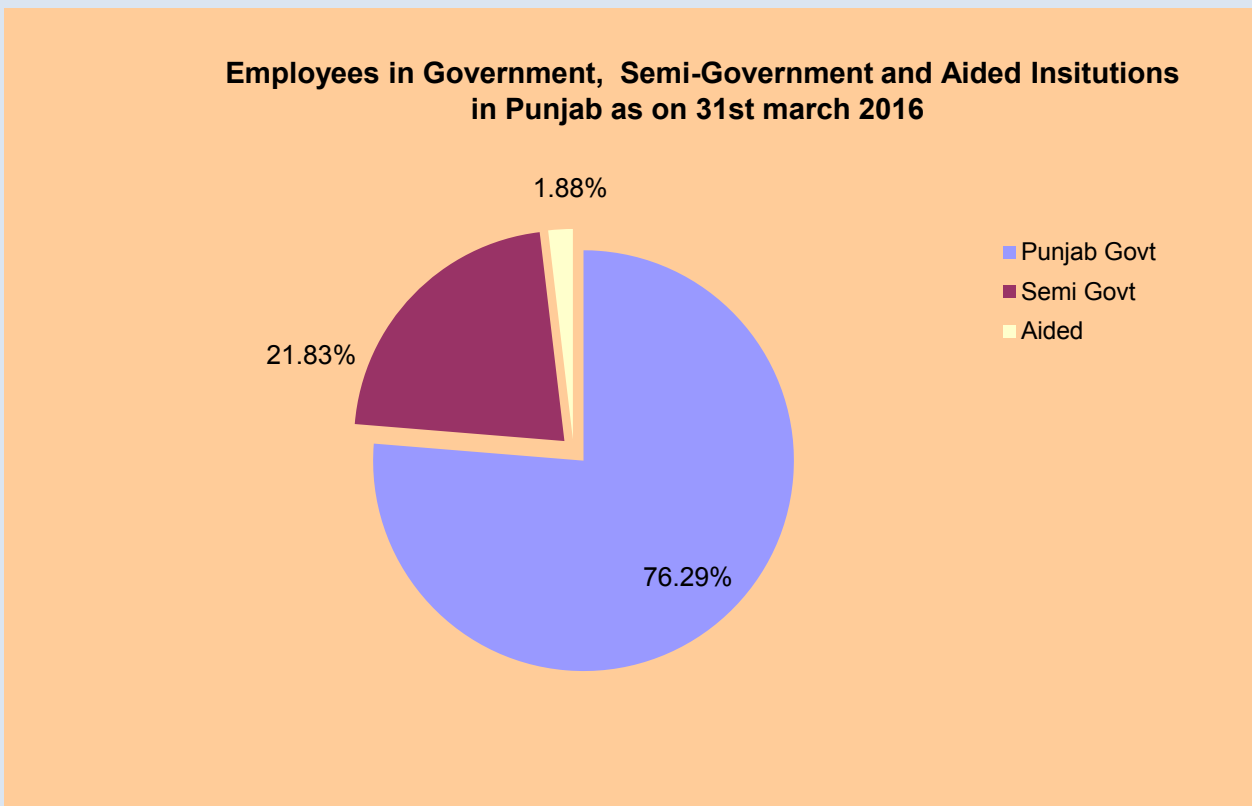
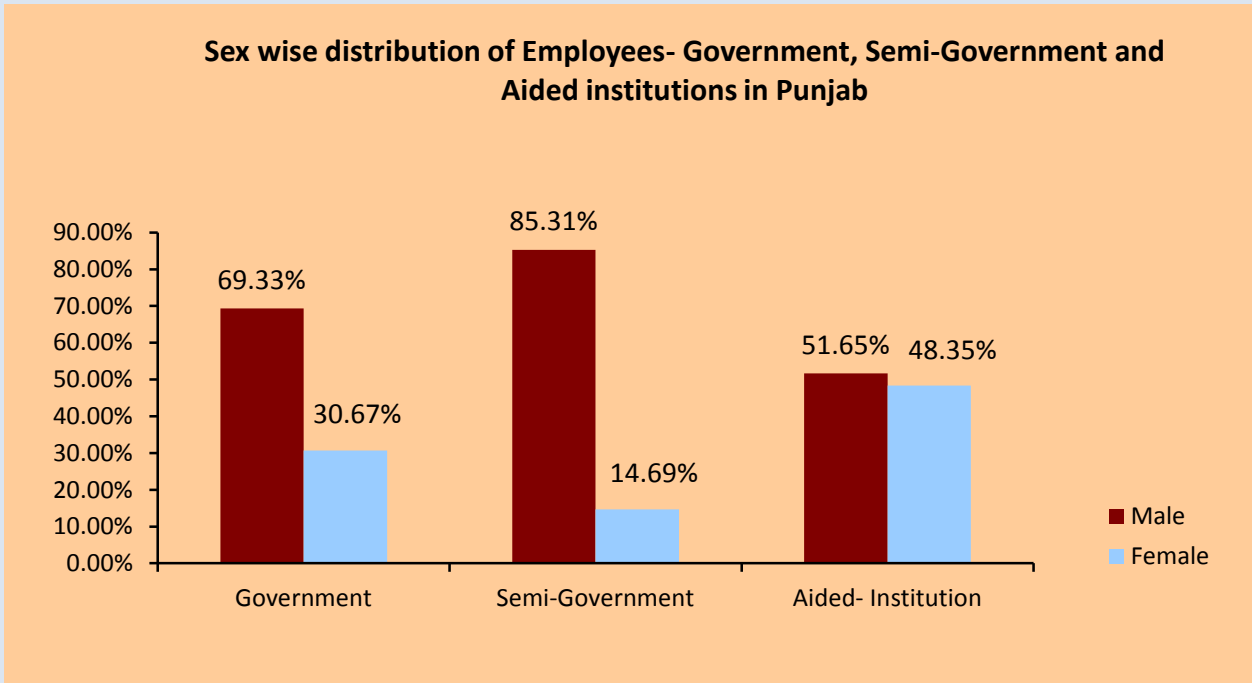


Table 02

Pay Scale and Group Wise Employees Working at State Headquarter and District Level as on 31st March : 2016

Date : 22-Mar-2018

Sr.No	Pay Scale/GradePay	State Headquarter (Chandigarh)	District Level	Total	%age of Employees Working at Chandigarh	%age of Employees Working at District Level	% to Total Employees
Pay Scale Wise Distribution of Group A Employees							
1	5910-20200+3000	0	0	0	0.00	0.00	0.00
2	10300-34800+5000	123	13241	13364	0.92	99.08	4.37
3	10300-34800+5400	153	4221	4374	3.50	96.50	1.43
4	15600-39100+5400	737	2812	3549	20.77	79.23	1.16
5	15600-39100+5700	11	288	299	3.68	96.32	0.10
6	15600-39100+6000	42	635	677	6.20	93.80	0.22
7	15600-39100+6600	148	1660	1808	8.19	91.81	0.59
8	15600-39100+7000	0	42	42	0.00	100.00	0.01
9	15600-39100+7400	10	307	317	3.15	96.85	0.10
10	15600-39100+7600	41	454	495	8.28	91.72	0.16
11	15600-39100+7800	30	684	714	4.20	95.80	0.23
12	15600-39100+8000	0	33	33	0.00	100.00	0.01
13	15600-39100+8200	2	8	10	20.00	80.00	0.00
14	15600-39100+8400	21	310	331	6.34	93.66	0.11
15	37400-67000+8600	123	1489	1612	7.63	92.37	0.53
16	37400-67000+8700	47	165	212	22.17	77.83	0.07
17	37400-67000+8800	3	72	75	4.00	96.00	0.02
18	37400-67000+8900	8	125	133	6.02	93.98	0.04
19	37400-67000+9000	1	211	212	0.47	99.53	0.07
20	37400-67000+10000	63	205	268	23.51	76.49	0.09
21	Any Other	416	385	801	51.94	48.06	0.26
	Total	1979	27347	29326	6.75	93.25	9.59
Pay Scale Wise Distribution of Group B Employees							
22	10300-34800+3800	161	2497	2658	6.06	93.94	0.87
23	10300-34800+4200	215	22198	22413	0.96	99.04	7.33
24	10300-34800+4400	2855	15347	18202	15.69	84.31	5.95
25	10300-34800+4600	383	6315	6698	5.72	94.28	2.19
26	10300-34800+4800	497	4128	4625	10.75	89.25	1.51
27	10300-34800+5000	0	1424	1424	0.00	100.00	0.47
28	Any Other	37	863	900	4.11	95.89	0.29
	Total	4148	52772	56920	7.29	92.71	18.61
Pay Scale Wise Distribution of Group C Employees							
29	5910-20200+1900	222	4155	4377	5.07	94.93	1.43
30	5910-20200+1950	38	1435	1473	2.58	97.42	0.48
31	5910-20200+2000	32	1747	1779	1.80	98.20	0.58
32	5910-20200+2400	531	8173	8704	6.10	93.90	2.85
33	5910-20200+2800	81	5114	5195	1.56	98.44	1.70
34	5910-20200+3000	158	2350	2508	6.30	93.70	0.82
35	10300-34800+3200	3197	83531	86728	3.69	96.31	28.36
36	10300-34800+3600	814	22280	23094	3.52	96.48	7.55
37	10300-34800+3800	0	2575	2575	0.00	100.00	0.84
38	10300-34800+4200	0	3700	3700	0.00	100.00	1.21
39	10300-34800+4400	5	368	373	1.34	98.66	0.12
40	10300-34800+4600	1	92	93	1.08	98.92	0.03
41	10300-34800+4800	1	0	1	100.00	0.00	0.00
42	Any Other	42	4140	4182	1.00	99.00	1.37
	Total	5122	139660	144782	3.54	96.46	47.35
Pay Scale Wise Distribution of Group D Employees							
43	4900-10680+1300	100	3304	3404	2.94	97.06	1.11
44	4900-10680+1400	50	3818	3868	1.29	98.71	1.26
45	4900-10680+1650	1619	32567	34186	4.74	95.26	11.18
46	Any Other	473	4256	4729	10.00	90.00	1.55
	Total	2242	43945	46187	4.85	95.15	15.10
Pay Scale Wise Distribution of Contract Basis Employees							
47	1-5000	69	3722	3791	1.82	98.18	1.24
48	5001-10000	439	5733	6172	7.11	92.89	2.02
49	10000 & Above	186	3712	3898	4.77	95.23	1.27
50	Any Other	0	133	133	0.00	100.00	0.04
	Total	694	13300	13994	4.96	95.04	4.58
Pay Scale Wise Distribution of Contingency Paid Employees							
51	1-5000	17	4990	5007	0.34	99.66	1.64
52	5001-10000	43	1694	1737	2.48	97.52	0.57

Table 02

Pay Scale and Group Wise Employees Working at State Headquarter and District Level as on 31st March : 2016

Date : 22-Mar-2018

Sr.No	Pay Scale/GradePay	State Headquarter (Chandigarh)	District Level	Total	%age of Employees Working at Chandigarh	%age of Employees Working at District Level	% to Total Employees
53	10000 & Above	9	3772	3781	0.24	99.76	1.24
54	Any Other	36	1030	1066	3.38	96.62	0.35
	Total	105	11486	11591	0.91	99.09	3.79
Pay Scale Wise Distribution of Any Others Employees							
55	1-5000	10	1960	1970	0.51	99.49	0.64
56	5001-10000	4	356	360	1.11	98.89	0.12
57	10000 & Above	32	626	658	4.86	95.14	0.22
58	Any Other	10	2	12	83.33	16.67	0.00
	Total	56	2944	3000	1.87	98.13	0.98
	Grand Total	14346	291454	305800	4.69	95.31	100.00

Table 03
District-wise/Group-Wise Distribution of Punjab Govt. Employees as on 31st March :2016

Date : 22-Mar-2018											
Sr.No	District Name	Group A	Group B	Group C	Group D	Contract Basis	Contingency Paid	Any Others	Worked Charged	Total	%age
1	Amritsar	963	7724	10530	3874	295	145	0	265	23796	7.78
2	Bathinda	583	3028	7783	1751	1328	1037	305	91	15906	5.20
3	Faridkot	288	1666	2295	915	433	1540	626	1	7764	2.54
4	Fatehgarh Sahib	1792	1727	1768	899	146	120	8	0	6460	2.11
5	Firozepur	1866	2568	4067	2169	1534	468	542	1	13215	4.32
6	Gurdaspur	3547	2140	6135	3120	31	1232	0	0	16205	5.30
7	Hoshiarpur	1839	1081	11665	4425	2461	384	0	0	21855	7.15
8	Jalandhar	1156	2826	20411	2562	8	1017	39	0	28019	9.16
9	Kapurthala	2001	1522	2910	1060	397	827	352	0	9069	2.97
10	Ludhiana	1306	3289	21544	4598	417	239	51	0	31444	10.28
11	Mansa	1680	1884	2493	1003	631	1608	0	0	9299	3.04
12	Moga	318	2454	4368	861	839	89	2	29	8960	2.93
13	Sri Muktsar Sahib	2075	1793	2353	705	52	30	9	2	7019	2.30
14	SBS Nagar	1004	1543	2315	972	757	63	4	0	6658	2.18
15	Patiala	1670	3642	12475	4288	432	412	10	0	22929	7.50
16	Rupnagar	436	2047	3929	1596	439	732	25	147	9351	3.06
17	Sangrur	623	1883	6693	2148	1563	749	109	0	13768	4.50
18	SAS Nagar	2264	2291	3106	1325	181	97	20	0	9284	3.04
19	Barnala	1244	1264	1760	618	699	197	6	31	5819	1.90
20	Tarn Taran	250	1744	3038	802	5	1	0	0	5840	1.91
21	Fazilka	209	1970	4105	848	89	46	14	0	7281	2.38
22	Pathankot	233	2686	3834	2922	563	453	822	0	11513	3.76
23	Chandigarh	1979	4148	5122	2242	694	105	56	0	14346	4.69
Total		29326	56920	144699	45703	13994	11591	3000	567	305800	100

Table 04
District-Department Wise Distribution of Punjab Government Employees as on 31st March :2016

Date : 22-Mar-2018

Department Category Name	Sr.No	Department Name	Amritsar	Bathinda	Faridkot	Fatehgarh Sahib	Firozpur	Gurdaspur	Hoshiarpur	Jalandhar	Kapurthala	Ludhiana	Mansa	Moga	Sri Muktsar Sahib	SBS Nagar	Patiala	Rupnagar	Sangrur	SAS Nagar	Barnala	Tarn Taran	Fazilka	Pathankot	Total	Chandigarh	Total		
General Services	1	Pb Vidhan Sabha	0	0	0	0	0	0	0	0	0	0	0	0	0	0	0	0	0	0	0	0	0	0	0	0	300	300	
	2	Pb. Raj Bhawan	0	0	0	0	0	0	0	0	0	0	0	0	0	0	0	0	0	0	0	0	0	0	0	0	0	0	
	3	Legal Remembrancer	0	0	0	0	0	0	0	0	0	0	0	0	0	0	0	0	0	0	0	0	0	0	0	0	52	52	
	4	Advocate General	0	39	0	0	0	0	0	0	0	0	0	0	0	0	0	0	0	0	0	0	0	0	0	0	39	421	460
	5	Prosecution & Litigation	31	0	27	0	47	27	33	40	16	0	17	15	15	16	57	63	34	0	12	0	0	0	0	0	450	67	517
	6	Justice	340	433	87	226	476	338	135	395	262	940	170	168	171	190	582	253	386	0	129	0	0	71	0	0	5752	0	5752
	7	Election	38	11	9	12	11	19	19	17	10	29	10	12	9	11	30	11	13	14	15	9	4	0	0	0	313	55	368
	8	Language	3	4	5	5	2	3	5	8	6	4	3	0	0	0	116	6	6	0	0	0	0	0	0	0	176	0	176
	9	Financial Commissioner	0	0	0	0	0	0	0	0	0	0	0	0	0	0	0	0	0	0	0	0	0	0	0	0	0	0	0
	10	Revenue	625	385	251	315	366	484	544	704	367	772	300	336	68	261	468	292	627	304	342	333	384	196	0	0	8724	36	8760
	11	Excise & Taxation	146	66	40	47	67	85	44	185	48	231	34	30	33	29	222	39	85	83	3	0	19	0	0	0	1536	0	1536
	12	Punjab Public Service Commission	0	0	0	0	0	0	0	0	0	0	0	0	0	0	84	0	0	0	0	0	0	0	0	0	84	83	167
	13	Civil Secretariate	0	0	0	0	0	0	0	0	0	0	0	0	0	0	0	0	0	0	0	0	0	0	0	0	0	2012	2012
	14	Police	5497	2840	1498	1123	2043	3788	3064	11101	1868	8079	1734	1677	1623	1302	9093	1280	2602	1917	1091	2027	1123	1077	0	0	67447	2841	70288
	15	Home Guard	60	22	1037	3	489	1249	27	1043	338	40	3	0	0	0	28	657	22	44	0	77	49	0	0	0	5188	42	5230
	16	Jails	277	167	177	0	214	75	97	162	154	373	48	29	28	0	313	77	157	0	45	20	29	19	0	0	2461	81	2542
	17	Treasury & Accounts	45	24	16	16	28	34	37	30	24	42	10	14	10	10	49	26	33	0	11	12	0	0	0	0	471	58	529
	18	Local Fund Examiner	0	25	6	0	5	0	0	31	0	37	0	0	0	0	29	0	0	0	0	0	0	0	0	0	133	53	186
	19	Controller Internal Audit	8	17	0	0	5	3	0	12	5	8	0	0	0	0	14	45	7	0	0	0	0	0	0	0	124	32	156
	20	Institutional Finance & Banking	0	0	0	0	0	0	0	6	0	0	0	0	0	0	0	0	0	0	0	0	0	0	0	0	6	10	16
	21	Printing & Stationary	4	0	0	0	0	0	3	7	0	2	0	0	0	0	391	0	0	122	0	0	0	0	0	0	529	111	640
	22	Local Government	13	0	0	0	10	0	0	9	0	7	0	0	0	0	13	0	0	0	0	0	0	0	0	0	52	488	540
	23	Subordinate Services Board	0	0	0	0	0	0	0	0	0	0	0	0	0	0	0	0	0	0	0	0	0	0	0	0	0	0	0
Social Services	24	General Education	6735	5646	1645	2959	4328	5379	11270	7263	3578	12471	3488	4420	3637	2537	3488	3253	5497	3643	2726	1006	3879	2952	0	0	101800	495	102295
	25	Technical Education & Industrial Training	204	131	104	69	299	454	225	416	38	557	55	124	32	92	261	169	116	147	29	50	60	84	0	0	3716	112	3828
	26	Sports	12	9	9	5	6	11	11	15	13	12	3	12	19	4	11	4	7	29	7	2	6	9	0	0	216	279	495
	27	Youth Services	3	3	0	0	2	0	3	5	0	3	0	0	0	0	3	3	2	1	0	0	0	0	0	0	28	26	54
	28	Cultural Affaires Museum Archaeology & Archives	0	0	0	0	0	0	8	0	0	0	2	0	0	0	26	58	6	0	0	0	0	0	0	0	100	169	269
	29	Health & Family Welfare	3460	1163	819	641	844	1681	2886	2370	829	2731	684	738	558	568	2055	747	1611	1096	547	1027	91	447	0	0	27593	627	28220
	30	Water Supply Public Health	635	348	78	143	332	133	461	246	75	235	282	277	0	267	866	432	648	724	36	348	414	375	0	0	7355	0	7355
	31	Town & Country Planning	47	21	14	21	18	11	12	31	10	28	0	0	0	0	38	16	20	23	0	0	0	0	0	0	310	63	373
	32	Chief Architect	0	0	0	0	0	0	0	0	0	0	0	0	0	0	39	0	0	0	0	0	0	0	0	0	39	77	116
	33	Information & Publicity	17	11	6	10	10	13	11	23	8	0	0	7	6	8	17	9	8	7	7	7	0	6	0	0	191	161	352
	34	Social Welfare & Welfare of SCs & BCs	49	2536	1105	73	61	130	309	731	715	176	1604	52	37	60	503	61	108	76	274	65	56	1003	0	0	9784	284	10068
	35	Labour	20	18	0	11	13	6	8	32	6	20	1	4	0	0	0	0	13	16	0	12	0	0	0	0	180	52	232

Table 04
District-Department Wise Distribution of Punjab Government Employees as on 31st March :2016

Date : 22-Mar-2018

Department Category Name	Sr.No	Department Name	Amritsar	Bathinda	Faridkot	Fatehgarh Sahib	Firozpur	Gurdaspur	Hoshiarpur	Jalandhar	Kapurthala	Ludhiana	Mansa	Moga	Sri Muktsar Sahib	SBS Nagar	Patiala	Rupnagar	Sangrur	SAS Nagar	Barnala	Tarn Taran	Fazilka	Pathankot	Total	Chandigarh	Total	
Social Services	36	Employment	18	13	12	9	13	10	10	5	11	25	5	4	4	4	0	10	12	0	4	0	6	6	181	57	238	
	37	Subordinate Services Selection Board	0	0	0	0	0	0	0	0	0	0	0	0	0	0	0	0	0	0	0	0	0	0	0	0	0	0
	38	Sainik Welfare	11	8	12	9	4	11	15	3	5	8	3	5	6	6	0	6	5	4	0	0	0	0	0	121	72	193
	39	Hospitality	0	0	9	0	0	0	0	0	17	0	0	0	0	0	0	0	0	0	0	0	0	0	0	26	283	309
	40	Rehabilitation	0	0	0	0	0	0	0	0	0	0	0	0	0	0	0	0	0	0	0	0	0	0	0	0	0	0
	41	Administrative General Official Trustee & Charitab	0	0	0	0	0	0	0	0	0	0	0	0	0	0	0	0	0	0	0	0	0	0	0	0	4	4
	42	Information Technology	0	0	0	0	0	0	0	13	23	0	0	0	0	0	0	0	0	0	0	0	0	0	0	36	18	54
	43	Agriculture	200	118	103	50	69	223	198	161	81	258	57	51	38	64	45	67	95	54	32	126	53	77	2220	329	2549	
Economic Services	44	Horticulture	61	33	20	32	9	52	106	81	17	41	13	11	24	14	114	24	27	12	3	12	0	71	777	44	821	
	45	Soil Conservation	72	40	28	7	62	73	67	34	0	43	28	14	45	33	37	13	38	83	7	0	4	0	728	59	787	
	46	Animal Husbandary	320	395	0	184	180	383	369	409	215	610	235	223	153	148	379	196	451	137	146	134	131	10	5408	149	5557	
	47	Dairy Development	20	8	5	11	7	12	9	7	6	18	6	6	5	4	8	15	22	5	2	7	0	0	183	33	216	
	48	Fisheries	0	11	11	18	18	25	21	6	16	21	8	5	8	12	23	23	31	0	0	0	0	0	0	257	29	286
	49	Forest	120	85	36	11	92	82	175	89	29	0	30	0	115	86	162	231	68	81	17	21	0	110	1640	27	1667	
	50	Cooperation	105	82	38	46	58	65	96	102	27	109	37	44	0	6	138	29	73	23	14	22	18	13	1145	189	1334	
	51	Rural Dev. & Panchayats	743	258	55	61	124	159	159	108	49	147	40	49	51	40	175	43	105	31	32	71	36	54	2590	82	2672	
	52	Consolidation	0	0	0	0	0	0	0	0	0	0	0	0	0	0	0	0	0	0	0	0	0	0	0	0	0	0
	53	Colonization	0	0	0	0	33	0	0	0	0	0	0	0	0	0	0	0	0	0	0	0	0	0	0	33	34	67
	54	Irrigation	2049	533	185	0	1497	556	693	527	0	1006	222	0	110	390	1238	214	396	191	92	0	791	4311	15001	1809	16810	
	55	Chief Electrical Inspector	0	0	0	0	0	0	0	0	0	0	0	0	0	0	53	0	0	0	0	0	0	0	0	53	0	53
	56	Industries	18	30	12	21	23	37	8	82	22	138	12	22	14	18	96	3	26	50	0	0	0	4	636	244	880	
	57	Transport	803	6	8	12	910	220	203	496	4	873	0	430	0	340	42	417	14	2	1	227	0	459	5467	1303	6770	
	58	Civil Aviation	0	0	0	0	0	0	0	479	0	0	0	0	0	0	17	0	0	0	0	0	0	0	0	496	38	534
	59	Public Works Deptt. B&R	808	195	201	210	242	360	410	287	145	1137	53	96	75	51	1390	480	163	309	109	128	113	135	7097	0	7097	
	60	Tourism	0	1	0	0	0	0	0	0	0	0	0	0	0	0	0	0	0	0	0	0	0	0	0	1	58	59
	61	ESO Punjab	30	20	0	10	21	14	22	16	16	24	8	11	10	12	23	18	20	10	12	16	15	24	352	0	352	
62	Food Civil Supplies & Consumer Affairs	149	149	96	88	164	0	69	200	56	189	94	74	115	74	193	59	214	44	74	81	0	0	2182	252	2434		
63	Punjab State Planning Board	0	0	0	0	0	0	0	0	0	0	0	0	0	0	0	0	0	0	0	0	0	0	0	0	80	80	
64	Lotteries & Small Savings	0	2	0	2	0	0	0	5	0	0	0	0	0	0	1	0	2	0	2	0	0	0	0	14	12	26	
65	Lok Pal	0	0	0	0	13	0	0	0	0	0	0	0	0	0	0	0	0	0	0	0	0	0	0	13	30	43	
66	Pensioners & Welfare of Pensioners	0	0	0	0	0	0	0	0	0	0	0	0	0	0	0	0	0	0	0	0	0	0	0	0	11	11	
67	District Social Security Officer DSSO	0	0	0	0	0	0	0	0	0	0	0	0	0	0	0	0	0	0	0	0	0	0	0	0	0	0	
68	Finance	0	0	0	0	0	0	0	0	0	0	0	0	0	0	0	0	0	0	0	0	0	0	0	0	13	13	
			23796	15906	7764	6460	13215	16205	21855	28019	9069	31444	9299	8960	7019	6658	22929	9351	13768	9284	5819	5840	7281	11513	291454	14346	305800	

BOX-3: Punjab Government Employees

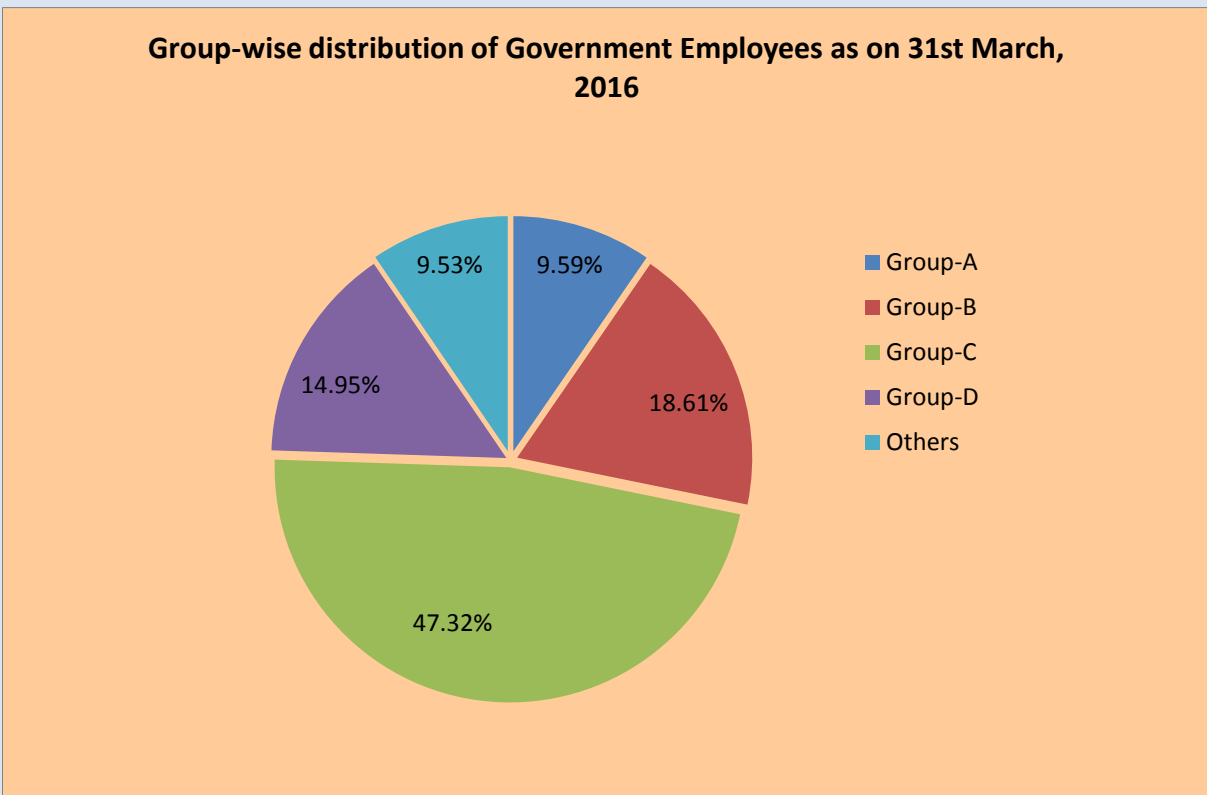
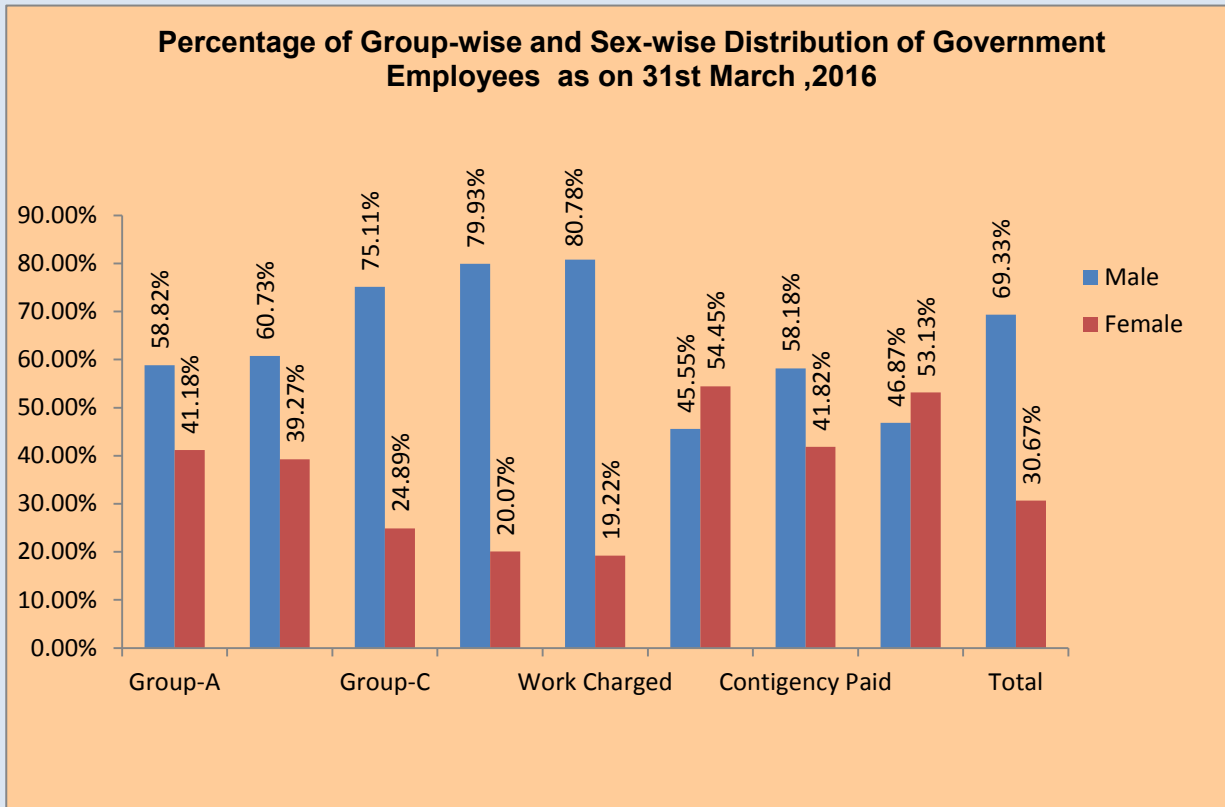


Table 05
Department-wise/Group-wise/Sex-wise Distribution of Punjab Govt. Employees as on 31st March: 2016

Date : 22-Mar-2018																								
Department Category Name	Sr. No	Name of Department	Group A		Group B		Group C		Group D		Work Charged		Contract Basis		Contingency Paid		Any Other		Total		Grand Total	%age to Grand Total		
			Male	Female	Male	Female	Male	Female	Male	Female	Male	Female	Male	Female	Male	Female	Male	Female	Male	Female		Male	Female	
General Services	1	Pb Vidhan Sabha	29	12	38	19	90	26	84	2	0	0	0	0	0	0	0	0	0	241	59	300	80	20
	2	Pb. Raj Bhawan	0	0	0	0	0	0	0	0	0	0	0	0	0	0	0	0	0	0	0	0	0	0
	3	Legal Remembrancer	6	3	8	4	6	6	4	11	0	0	1	1	0	2	0	0	0	25	27	52	48	52
	4	Advocate General	173	40	40	12	60	33	58	3	0	0	17	11	0	0	4	9	352	108	460	77	23	
	5	Prosecution & Litigation	75	6	163	28	82	78	62	3	0	0	13	4	1	0	0	2	396	121	517	77	23	
	6	Justice	342	137	728	196	1452	423	1748	132	0	0	168	91	207	59	51	18	4696	1056	5752	82	18	
	7	Election	23	3	60	25	80	20	41	4	0	0	40	49	8	9	0	6	252	116	368	68	32	
	8	Language	7	14	31	26	28	18	36	8	0	0	0	0	5	3	0	0	107	69	176	61	39	
	9	Financial Commissioner	0	0	0	0	0	0	0	0	0	0	0	0	0	0	0	0	0	0	0	0	0	0
	10	Revenue	189	49	851	223	4701	726	1447	370	0	0	134	28	19	11	9	3	7350	1410	8760	84	16	
	11	Excise & Taxation	163	50	285	74	424	114	352	60	0	0	7	1	3	3	0	0	1234	302	1536	80	20	
	12	Punjab Public Service Commission	21	10	32	22	34	6	34	2	0	0	2	1	2	1	0	0	125	42	167	75	25	
	13	Civil Secretariate	171	104	456	257	523	162	291	33	0	0	1	1	3	3	7	0	1452	560	2012	72	28	
	14	Police	457	65	5743	682	51067	9286	1373	436	0	0	455	215	403	106	0	0	59498	10790	70288	85	15	
	15	Home Guard	26	1	53	14	391	65	108	31	0	0	0	0	4500	41	0	0	5078	152	5230	97	3	
	16	Jails	44	1	136	19	1873	127	158	26	0	0	130	7	13	4	4	0	2358	184	2542	93	7	
	17	Treasury & Accounts	28	4	95	26	209	69	68	12	0	0	7	4	2	0	1	4	410	119	529	78	22	
	18	Local Fund Examiner	24	3	65	27	25	7	27	5	0	0	2	0	1	0	0	0	144	42	186	77	23	
	19	Controller Internal Audit	53	5	37	14	7	7	23	6	0	0	0	1	3	0	0	0	123	33	156	79	21	
	20	Institutional Finance & Banking	5	3	2	0	1	0	1	1	0	0	0	0	2	1	0	0	11	5	16	69	31	
	21	Printing & Stationary	6	3	32	18	374	40	77	60	0	0	22	1	7	0	0	0	518	122	640	81	19	
	22	Local Government	179	44	59	23	67	35	82	11	0	0	17	11	1	0	0	11	405	135	540	75	25	
	23	Subordinate Services Board	0	0	0	0	0	0	0	0	0	0	0	0	0	0	0	0	0	0	0	0	0	0
Social Services	24	General Education	7929	9192	14077	15342	22473	16140	5400	3558	0	0	1777	4565	473	964	140	265	52269	50026	102295	51	49	
	25	Technical Education & Industrial Training	476	206	936	335	629	375	518	172	0	0	87	35	18	3	25	13	2689	1139	3828	70	30	
	26	Sports	12	4	31	12	45	14	68	9	0	0	240	45	8	3	4	0	408	87	495	82	18	
	27	Youth Services	7	1	9	1	20	6	9	1	0	0	0	0	0	0	0	0	45	9	54	83	17	
	28	Cultural Affaires Museum Archaeology & Archives	2	1	18	23	51	19	98	15	0	0	35	7	0	0	0	0	204	65	269	76	24	

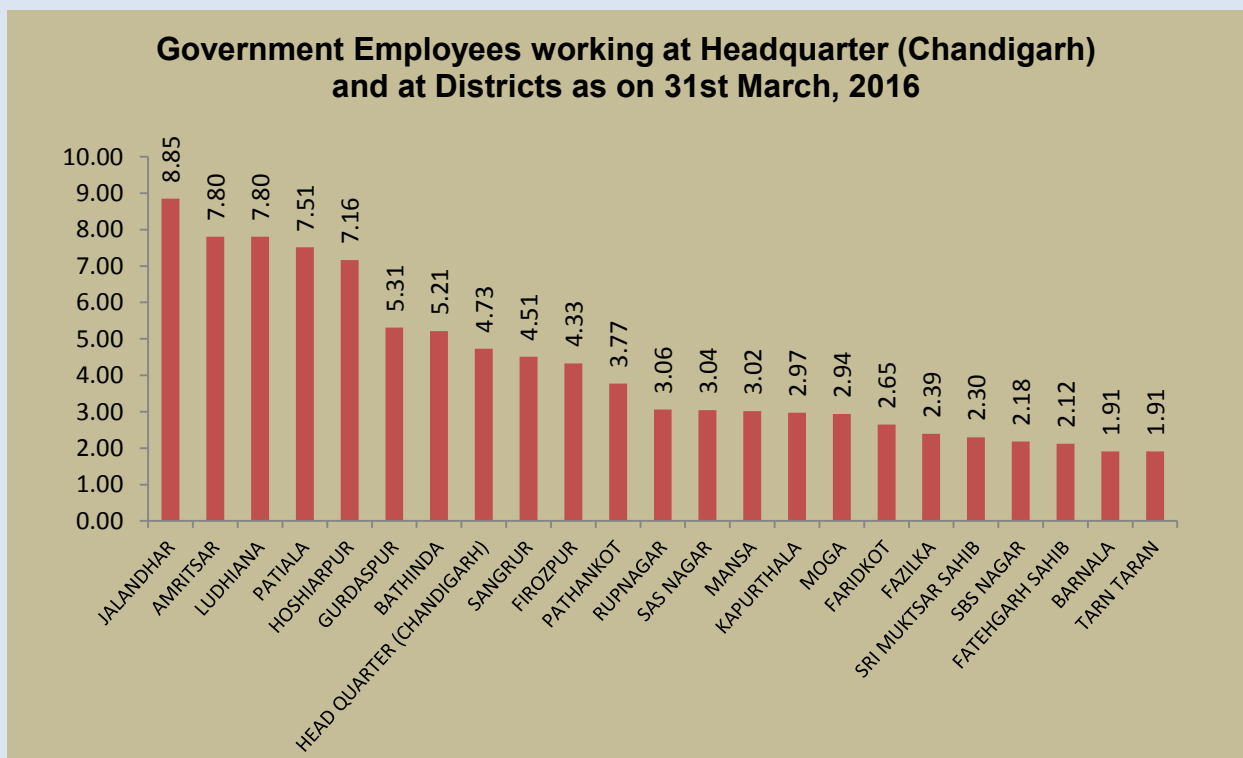
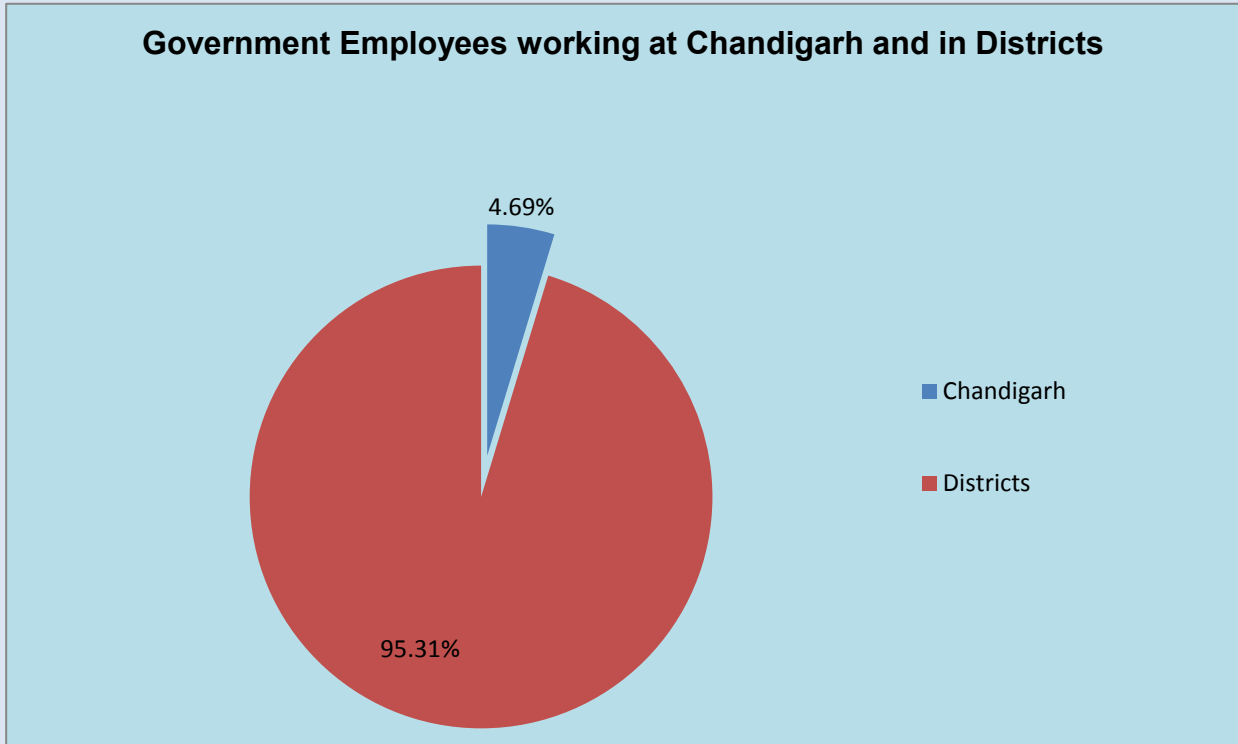
Table 05
Department-wise/Group-wise/Sex-wise Distribution of Punjab Govt. Employees as on 31st March: 2016

Date : 22-Mar-2018																							
Department Category Name	Sr. No	Name of Department	Group A		Group B		Group C		Group D		Work Charged		Contract Basis		Contingency Paid		Any Other		Total		Grand Total	%age to Grand Total	
			Male	Female	Male	Female	Male	Female	Male	Female	Male	Female	Male	Female	Male	Female	Male	Female	Male	Female		Male	Female
Social Services	29	Health & Family Welfare	2690	1541	3083	2939	4912	4290	5094	2045	0	0	323	821	143	332	3	4	16248	11972	28220	58	42
	30	Water Supply Public Health	265	23	532	102	2096	282	3081	220	146	83	477	32	6	6	4	0	6607	748	7355	90	10
	31	Town & Country Planning	58	7	53	21	87	24	88	9	0	0	23	1	0	0	0	2	309	64	373	83	17
	32	Chief Architect	18	15	18	12	25	6	19	3	0	0	0	0	0	0	0	0	80	36	116	69	31
	33	Information & Publicity	36	7	39	32	127	18	83	6	0	0	0	1	1	1	1	0	287	65	352	82	18
	34	Social Welfare & Welfare of SCs & BCs	96	49	307	337	446	1219	377	105	0	0	96	1593	293	3235	691	1224	2306	7762	10068	23	77
	35	Labour	27	3	30	17	59	23	59	8	0	0	5	1	0	0	0	0	180	52	232	78	22
	36	Employment	22	18	23	16	57	17	74	6	0	0	1	1	0	2	0	1	177	61	238	74	26
	37	Subordinate Services Selection Board	0	0	0	0	0	0	0	0	0	0	0	0	0	0	0	0	0	0	0	0	0
	38	Sainik Welfare	16	3	23	6	49	19	32	3	0	0	5	1	30	6	0	0	155	38	193	80	20
	39	Hospitality	13	3	10	3	42	7	163	9	0	0	30	4	24	1	0	0	282	27	309	91	9
	40	Rehabilitation	0	0	0	0	0	0	0	0	0	0	0	0	0	0	0	0	0	0	0	0	0
	41	Administrative General Official Trustee & Charitab	0	0	1	0	3	0	0	0	0	0	0	0	0	0	0	0	4	0	4	100	0
	42	Information Technology	6	0	8	2	17	4	3	5	0	0	0	0	0	0	0	9	0	43	11	54	80
43	Agriculture	617	81	186	103	728	112	574	122	0	0	24	2	0	0	0	0	2129	420	2549	84	16	
Economic Services	44	Horticulture	131	26	35	14	201	33	327	49	0	0	3	1	0	0	1	0	698	123	821	85	15
	45	Soil Conservation	120	10	159	29	213	24	208	24	0	0	0	0	0	0	0	0	700	87	787	89	11
	46	Animal Husbandary	850	162	600	65	1379	171	1482	262	0	0	286	6	273	19	0	2	4870	687	5557	88	12
	47	Dairy Development	7	1	37	7	104	18	37	2	0	0	0	0	1	0	1	1	187	29	216	87	13
	48	Fisheries	5	0	73	20	69	28	77	13	0	0	1	0	0	0	0	0	225	61	286	79	21
	49	Forest	27	1	237	42	644	187	427	34	2	0	3	1	58	4	0	0	1398	269	1667	84	16
	50	Cooperation	74	17	520	130	246	70	211	65	0	0	1	0	0	0	0	0	1052	282	1334	79	21
	51	Rural Dev. & Panchayats	202	14	348	180	1439	190	186	52	1	0	18	3	36	1	1	1	2231	441	2672	83	17
	52	Consolidation	0	0	0	0	0	0	0	0	0	0	0	0	0	0	0	0	0	0	0	0	0
	53	Colonization	4	0	16	1	18	2	10	4	0	0	5	1	5	1	0	0	58	9	67	87	13
	54	Irrigation	825	50	1307	281	5211	595	7681	627	0	0	212	2	5	0	4	10	15245	1565	16810	91	9
	55	Chief Electrical Inspector	19	0	8	3	8	6	7	2	0	0	0	0	0	0	0	0	42	11	53	79	21
	56	Industries	63	5	162	64	299	109	151	27	0	0	0	0	0	0	0	0	675	205	880	77	23

Table 05
Department-wise/Group-wise/Sex-wise Distribution of Punjab Govt. Employees as on 31st March: 2016

Date : 22-Mar-2018																							
Department Category Name	Sr. No	Name of Department	Group A		Group B		Group C		Group D		Work Charged		Contract Basis		Contingency Paid		Any Other		Total		Grand Total	%age to Grand Total	
			Male	Female	Male	Female	Male	Female	Male	Female	Male	Female	Male	Female	Male	Female	Male	Female	Male	Female		Male	Female
Economic Services	57	Transport	82	3	628	45	3337	253	369	42	0	0	1569	2	9	0	420	11	6414	356	6770	95	5
	58	Civil Aviation	9	0	88	23	131	28	182	68	0	0	5	0	0	0	0	0	415	119	534	78	22
	59	Public Works Deptt. B&R	401	35	742	166	1680	312	2883	342	309	26	15	14	161	11	0	0	6191	906	7097	87	13
	60	Tourism	0	0	3	4	9	2	7	1	0	0	26	7	0	0	0	0	45	14	59	76	24
	61	ESO Punjab	14	5	31	5	81	55	26	6	0	0	34	42	14	12	21	6	221	131	352	63	37
	62	Food Civil Supplies & Consumer Affairs	76	23	1258	246	228	102	416	40	0	0	38	5	2	0	0	0	2018	416	2434	83	17
	63	Punjab State Planning Board	15	9	9	6	8	6	14	0	0	0	9	0	2	2	0	0	57	23	80	71	29
	64	Lotteries & Small Savings	3	0	3	0	2	2	3	1	0	0	10	1	0	1	0	0	21	5	26	81	19
	65	Lok Pal	9	2	5	3	11	1	8	0	0	0	0	0	0	0	4	0	37	6	43	86	14
	66	Pensioners & Welfare of Pensioners	1	1	1	4	1	0	1	0	0	0	0	0	0	0	1	1	5	6	11	45	55
	67	District Social Security Officer DSSO	0	0	0	0	0	0	0	0	0	0	0	0	0	0	0	0	0	0	0	0	0
68	Finance	3	0	0	2	2	1	3	0	0	0	0	0	2	0	0	0	10	3	13	77	23	
		Total	17251	12075	34568	22352	108681	36018	36530	9173	458	109	6374	7620	6744	4847	1406	1594	212012	93788	305800	69	31

BOX-4(A): Distribution of Government Employees in District and State
Headquarter, Chandigarh



BOX-4(B): Distribution of Government Employees in Districts and State

Headquarter, Chandigarh

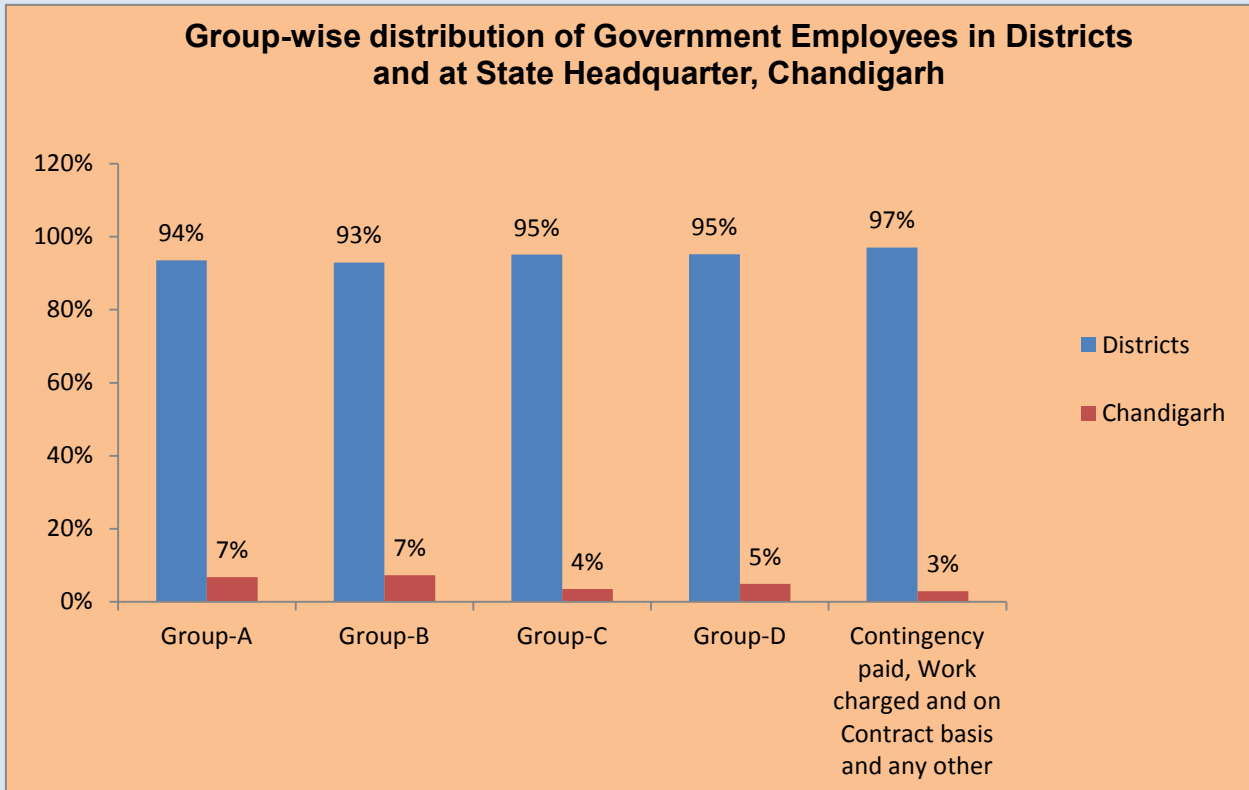
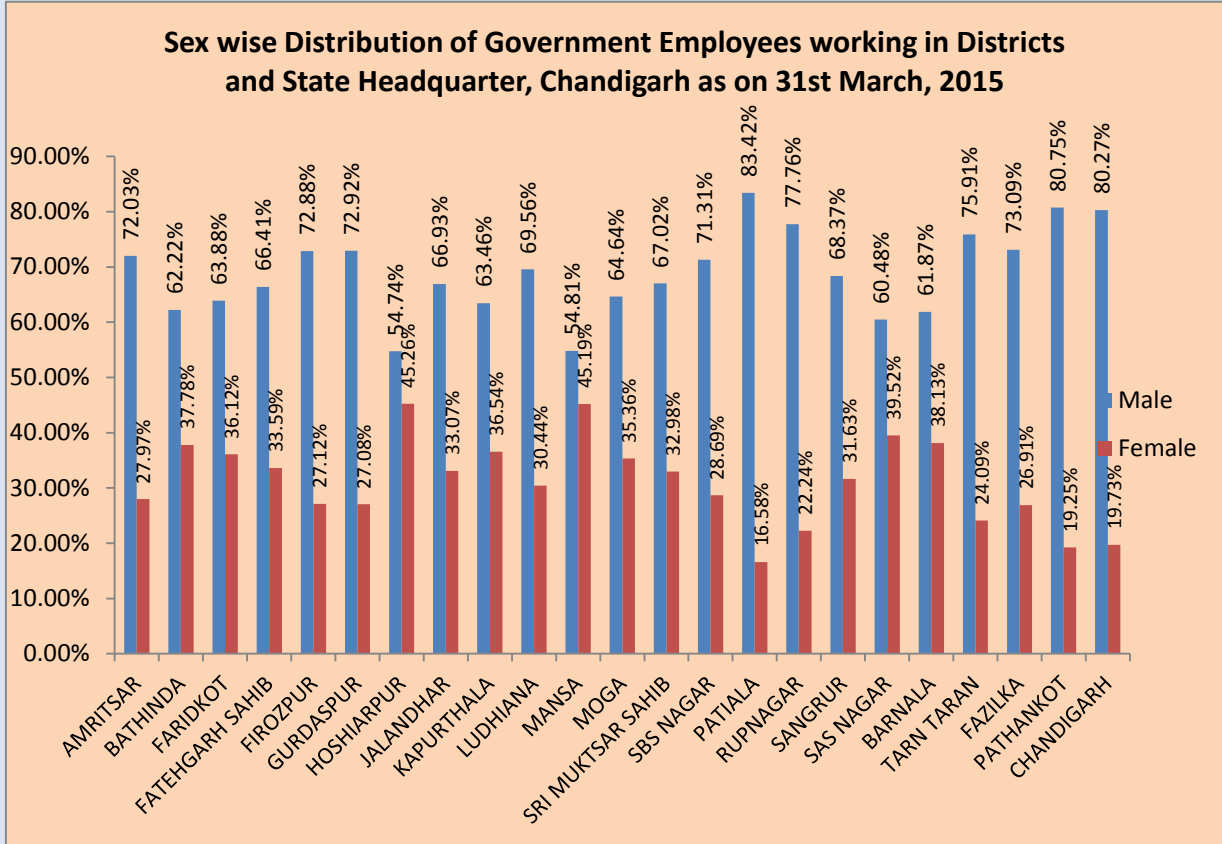
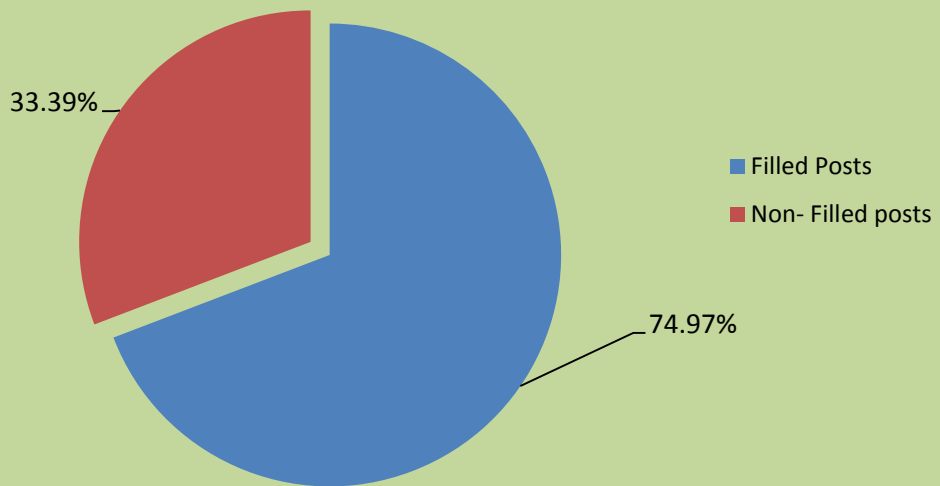


Table 06
District-wise/Group-wise/Sex-wise Distribution of Punjab Govt. Employees as on 31st March: 2016

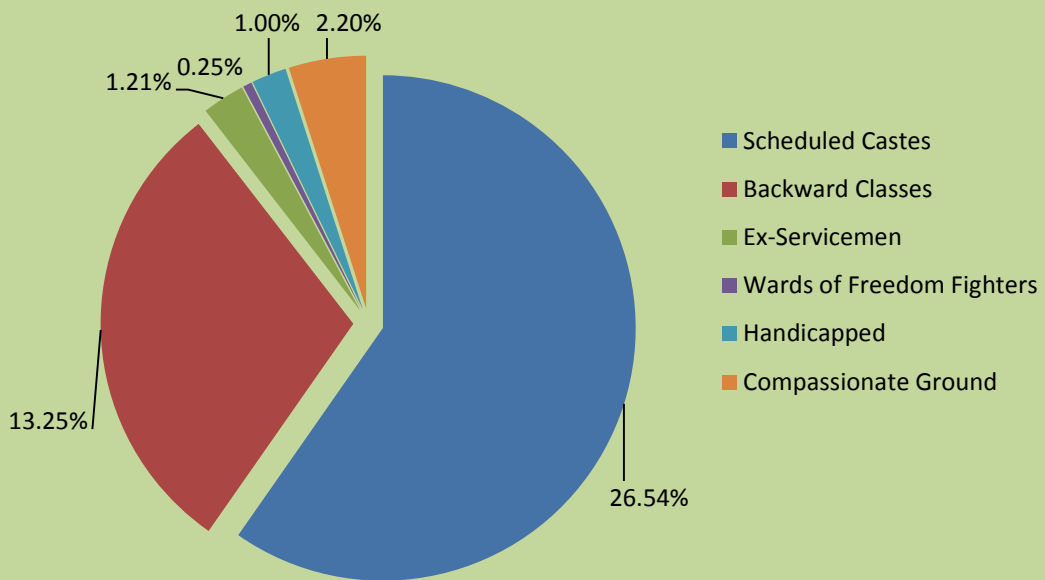
Date : 22-Mar-2018																						
Sr.No	District Name	Group A		Group B		Group C		Group D		Worked Charged		Contract Basis		Contingency Paid		Any Other		Total		Grand Total	%age to Grand Total	
		Male	Female	Male	Female	Male	Female	Male	Female	Male	Female	Male	Female	Male	Female	Male	Female	Male	Female		Male	Female
1	Amritsar	674	289	3928	3796	8666	1864	3213	661	253	12	272	23	10	135	0	0	17141	6655	23796	72.03	27.97
2	Bathinda	423	160	1785	1243	6090	1693	1342	409	56	35	29	1299	909	128	43	262	9896	6010	15906	62.22	37.78
3	Faridkot	225	63	929	737	1889	406	761	154	1	0	100	333	485	1055	0	626	4960	2804	7764	63.88	36.12
4	Fatehgarh Sahib	1026	766	928	799	1456	312	772	127	0	0	54	92	67	53	1	7	4290	2170	6460	66.41	33.59
5	Firozpur	988	878	1693	875	3528	539	1914	255	1	0	696	838	10	458	353	189	9631	3584	13215	72.88	27.12
6	Gurdaspur	1708	1839	1415	725	5045	1090	2411	709	0	0	23	8	17	1215	0	0	11817	4388	16205	72.92	27.08
7	Hoshiarpur	1196	643	780	301	6362	5303	2464	1961	0	0	1006	1455	228	156	0	0	11964	9891	21855	54.74	45.26
8	Jalandhar	828	328	2053	773	12946	7465	1909	653	0	0	7	1	29	988	22	17	18753	9266	28019	66.93	33.07
9	Kapurthala	974	1027	951	571	2447	463	847	213	0	0	147	250	440	387	2	350	5755	3314	9069	63.46	36.54
10	Ludhiana	901	405	2183	1106	14776	6768	3390	1208	0	0	405	12	40	199	17	34	21871	9573	31444	69.56	30.44
11	Mansa	761	919	1184	700	2056	437	770	233	0	0	261	370	1543	65	0	0	5097	4202	9299	54.81	45.19
12	Moga	235	83	1257	1197	3122	1246	696	165	24	5	386	453	17	72	0	2	5792	3168	8960	64.64	35.36
13	Sri Muktsar Sahib	1063	1012	998	795	1985	368	583	122	2	0	42	10	5	25	6	3	4704	2315	7019	67.02	32.98
14	SBS Nagar	633	371	804	739	1989	326	853	119	0	0	437	320	32	31	1	3	4748	1910	6658	71.31	28.69
15	Patiala	1227	443	2646	996	11016	1459	3676	612	0	0	341	91	197	215	6	4	19127	3802	22929	83.42	16.58
16	Rupnagar	320	116	1419	628	2989	940	1356	240	93	54	386	53	44	688	20	5	7271	2080	9351	77.76	22.24
17	Sangrur	447	176	1420	463	4836	1857	1867	281	0	0	526	1037	490	259	58	51	9413	4355	13768	68.37	31.63
18	SAS Nagar	928	1336	870	1421	2624	482	1040	285	0	0	100	81	52	45	8	12	5615	3669	9284	60.48	39.52
19	Barnala	552	692	751	513	1456	304	511	107	28	3	196	503	94	103	3	3	3600	2219	5819	61.87	38.13
20	Tarn Taran	201	49	932	812	2630	408	666	136	0	0	4	1	1	0	0	0	4433	1407	5840	75.91	24.09
21	Fazilka	183	26	1215	755	3054	1051	752	96	0	0	81	8	18	28	9	5	5322	1959	7281	73.09	26.91
22	Pathankot	178	55	1426	1260	3462	372	2756	166	0	0	297	266	97	356	822	0	9297	2216	11513	80.75	19.25
23	Chandigarh	1580	399	3001	1147	4257	865	1981	261	0	0	578	116	22	83	35	21	11515	2831	14346	80.27	19.73
Total		17251	12075	34568	22352	108681	36018	36530	9173	458	109	6374	7620	6744	4847	1406	1594	212012	93788	305800	69.33	30.67

**BOX-5(A): Reservation position in Punjab Government
Departments**

%age Distribution of Filled and Non-Filled posts of Government Employees



Category wise No. of filled posts as on 31st March, 2016



BOX-5(B): Reservation position in Punjab Government

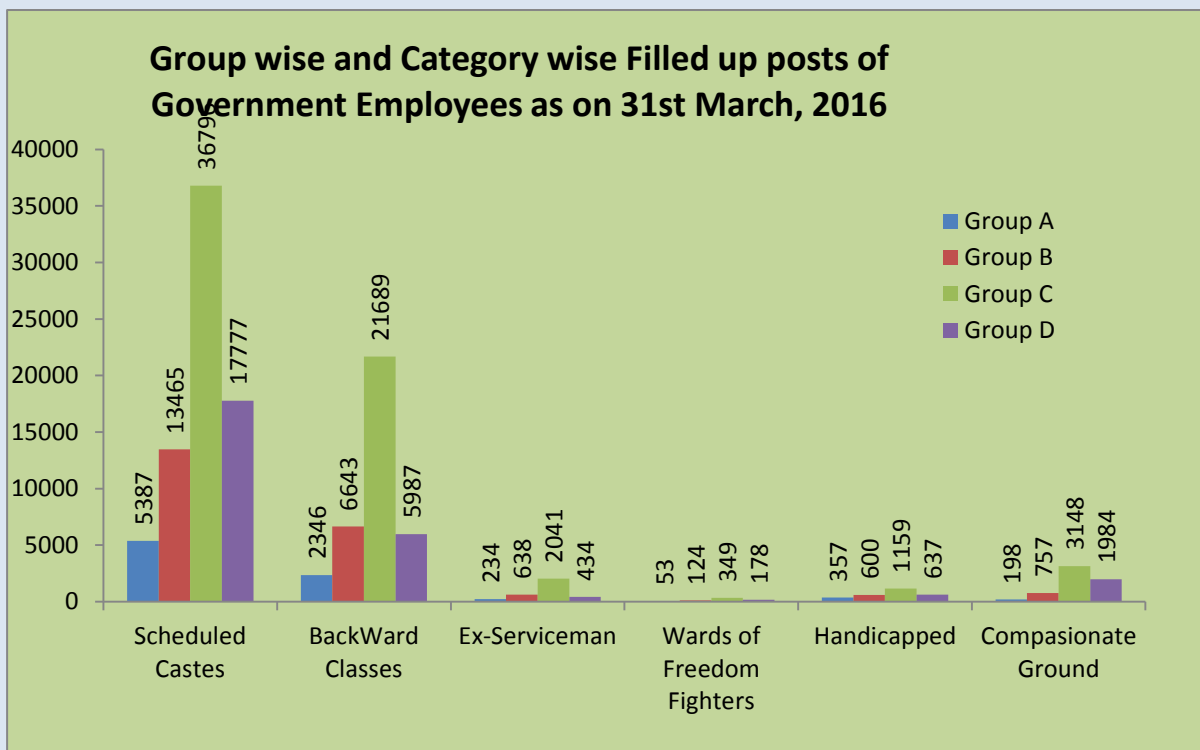
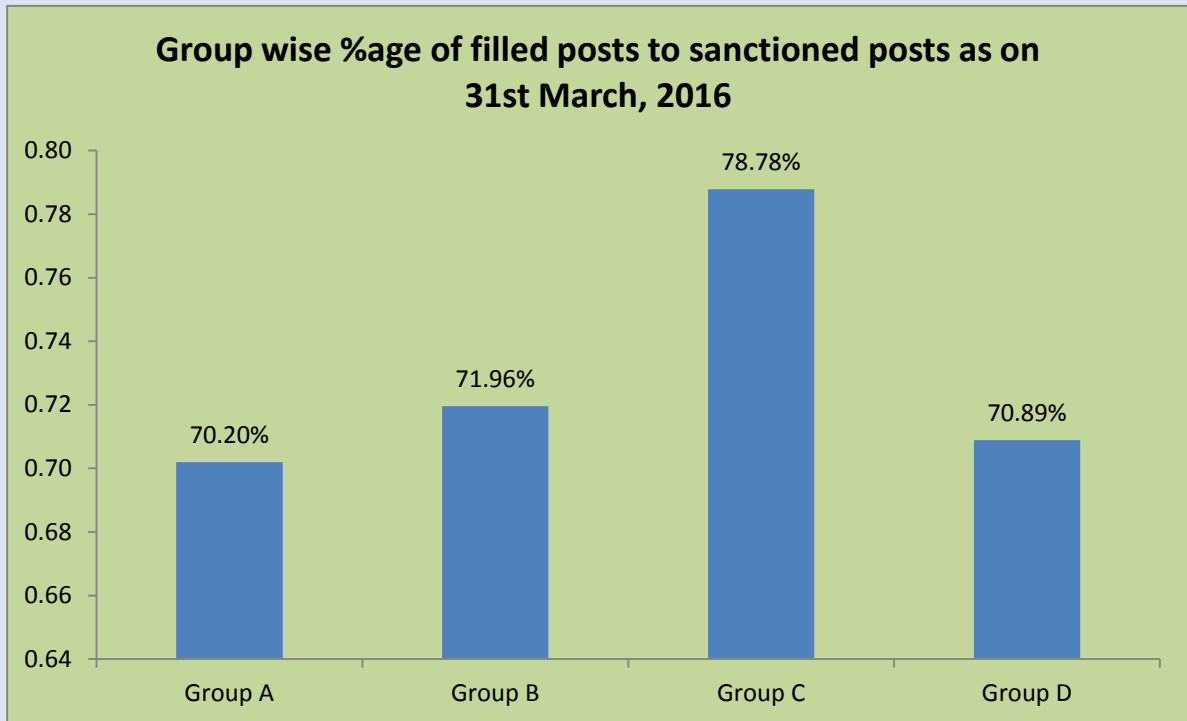


Table 07

Department-wise/Group-wise distribution of Scheduled Castes, Backward Classes, Ex-Servicemen, Wards of Freedom Fighters, Handicapped, Terrorist Affected and Compassionate Ground Employees as on 31st March: 2016

Date : 22-Mar-2018

Table No - 7.1																		
Department Category Name	Sr.No	Department Name	Ex Servieman				Wards of Freedom Fighters				Handicapped Employees				Compasionate Ground			
			Group A	Group B	Group C	Group D	Group A	Group B	Group C	Group D	Group A	Group B	Group C	Group D	Group A	Group B	Group C	Group D
General Services	1	Pb Vidhan Sabha	0	0	2	0	0	0	1	2	0	0	2	2	0	0	1	0
	2	Pb. Raj Bhawan	0	0	0	0	0	0	0	0	0	0	0	0	0	0	0	0
	3	Legal Remembrancer	0	0	0	0	0	0	0	0	0	0	1	1	0	0	2	0
	4	Advocate General	0	0	1	0	0	0	0	0	0	0	0	0	0	0	2	3
	5	Prosecution & Litigation	1	5	2	0	0	0	0	0	2	3	3	0	0	4	3	5
	6	Justice	3	7	34	36	0	3	2	7	5	14	34	20	2	0	14	36
	7	Election	0	2	2	2	0	0	0	1	0	2	1	1	0	3	8	3
	8	Language	1	0	2	1	0	1	0	0	2	0	4	3	0	2	13	12
	9	Financial Commissioner	0	0	0	0	0	0	0	0	0	0	0	0	0	0	0	0
	10	Revenue	0	16	20	20	1	2	21	3	1	17	85	35	2	37	408	193
	11	Excise & Taxation	1	5	2	0	0	0	1	0	0	8	14	9	5	11	77	42
	12	Punjab Public Service Commission	0	0	2	0	0	0	0	0	0	4	0	2	0	0	4	8
	13	Civil Secretariate	0	2	8	2	0	1	2	0	0	11	17	3	0	1	26	4
	14	Police	0	58	1157	21	0	4	73	9	0	14	42	7	0	29	621	44
	15	Home Guard	0	0	27	1	0	0	2	1	0	1	7	3	0	0	41	21
	16	Jails	2	2	6	2	0	1	0	0	0	1	7	4	0	4	38	8
	17	Treasury & Accounts	0	0	2	0	0	0	0	0	1	3	10	0	0	7	37	12
	18	Local Fund Examiner	0	0	0	0	0	0	0	0	0	0	1	0	0	0	1	0
	19	Controller Internal Audit	0	0	0	0	0	0	0	0	1	2	0	1	0	0	0	2
	20	Institutional Finance & Banking	0	0	0	0	0	0	0	0	0	0	0	0	0	0	0	0
	21	Printing & Stationary	0	0	1	0	0	0	4	0	0	3	5	5	0	4	30	21
	22	Local Government	0	0	0	0	0	1	0	0	0	1	1	0	0	0	3	5
	23	Subordinate Services Board	0	0	0	0	0	0	0	0	0	0	0	0	0	0	0	0
		Total	8	97	1268	85	1	13	106	23	12	84	234	96	9	102	1329	419
Social Services	24	General Education	178	350	357	154	38	75	129	80	262	264	353	142	71	262	648	276
	25	Technical Education & Industrial Training	2	25	7	12	0	0	1	1	6	16	17	14	8	39	73	71
	26	Sports	0	0	0	0	0	0	0	0	0	1	0	0	0	2	2	3
	27	Youth Services	0	0	0	0	0	0	0	0	0	0	0	0	0	0	0	1
	28	Cultural Affaires Museum Archaeology & Archives	0	1	0	4	0	0	0	0	0	0	2	1	0	2	3	2
	29	Health & Family Welfare	11	53	123	46	10	15	50	43	38	72	219	145	88	118	186	241
	30	Water Supply Public Health	4	2	16	5	0	0	1	1	1	16	39	30	2	13	100	172
	31	Town & Country Planning	0	0	1	1	0	0	0	0	0	1	5	2	1	2	7	9
	32	Chief Architect	1	0	0	0	0	0	0	0	0	2	1	0	0	7	2	5
	33	Information & Publicity	0	1	0	2	0	0	0	0	2	0	6	2	0	1	9	11
	34	Social Welfare & Welfare of SCs & BCs	4	19	18	8	0	1	3	1	1	15	24	10	1	9	21	30
	35	Labour	0	0	0	0	0	0	0	0	0	1	0	0	0	1	3	9
	36	Employment	0	0	0	1	1	0	0	0	0	2	1	1	1	2	10	6
	37	Subordinate Services Selection Board	0	0	0	0	0	0	0	0	0	0	0	0	0	0	0	0
	38	Sainik Welfare	5	6	23	9	0	0	0	0	0	0	1	0	0	2	2	1
	39	Hospitality	0	0	0	0	0	0	0	0	0	1	2	2	0	0	1	2
	40	Rehabilitation	0	0	0	0	0	0	0	0	0	0	0	0	0	0	0	0

Table 07

Department-wise/Group-wise distribution of Scheduled Castes, Backward Classes, Ex-Servicemen, Wards of Freedom Fighters, Handicapped, Terrorist Affected and Compassionate Ground Employees as on 31st March: 2016

Date : 22-Mar-2018																		
Table No - 7.1																		
Department Category Name	Sr.No	Department Name	Ex Servieman				Wards of Freedom Fighters				Handicapped Employees				Compasionate Ground			
			Group A	Group B	Group C	Group D	Group A	Group B	Group C	Group D	Group A	Group B	Group C	Group D	Group A	Group B	Group C	Group D
Social Services	41	Administrative General Official Trustee & Charitab	0	0	0	0	0	0	0	0	0	0	0	0	0	0	0	0
	42	Information Technology	0	0	0	0	0	0	0	0	0	0	1	0	0	0	0	0
	43	Agriculture	1	3	7	8	2	7	3	2	10	6	16	24	5	2	43	53
		Total	206	460	552	250	51	98	187	128	320	397	687	373	177	462	1110	892
Economic Services	44	Horticulture	3	0	8	1	0	0	0	0	2	0	2	7	1	4	12	31
	45	Soil Conservation	0	0	1	0	0	0	0	0	2	4	2	3	1	16	32	26
	46	Animal Husbandary	4	11	24	12	0	0	1	0	7	6	17	21	0	9	50	52
	47	Dairy Development	0	1	2	0	0	0	0	0	0	1	7	2	0	0	4	6
	48	Fisheries	0	0	1	1	0	0	1	0	0	1	2	2	0	5	7	16
	49	Forest	0	4	29	1	0	0	4	0	0	3	6	4	0	2	35	9
	50	Cooperation	1	10	7	5	0	0	0	0	0	10	7	12	3	25	63	44
	51	Rural Dev. & Panchayats	3	8	12	12	1	0	3	1	1	14	30	7	0	11	66	15
	52	Consolidation	0	0	0	0	0	0	0	0	0	0	0	0	0	0	0	0
	53	Colonization	0	0	0	0	0	0	0	0	0	0	0	0	0	0	0	0
	54	Irrigation	5	6	60	41	0	0	14	20	11	26	94	58	3	23	119	220
	55	Chief Electrical Inspector	0	0	0	0	0	0	0	0	0	1	1	0	0	1	1	1
	56	Industries	0	1	5	0	0	0	0	0	0	4	14	1	0	5	24	12
	57	Transport	1	4	50	1	0	0	30	1	0	5	16	5	0	15	156	44
	58	Civil Aviation	0	0	0	0	0	0	0	0	0	0	0	0	0	0	1	0
	59	Public Works Deptt. B&R	1	6	17	19	0	3	1	4	1	8	30	41	2	14	77	154
	60	Tourism	0	0	0	0	0	0	0	0	0	0	0	1	0	0	0	1
	61	ESO Punjab	1	2	0	0	0	0	0	0	0	3	6	0	0	0	54	13
	62	Food Civil Supplies & Consumer Affairs	0	26	4	6	0	10	2	1	1	32	4	3	2	63	8	29
	63	Punjab State Planning Board	1	2	1	0	0	0	0	0	0	1	0	0	0	0	0	0
64	Lotteries & Small Savings	0	0	0	0	0	0	0	0	0	0	0	0	0	0	0	0	
65	Lok Pal	0	0	0	0	0	0	0	0	0	0	0	0	0	0	0	0	
66	Pensioners & Welfare of Pensioners	0	0	0	0	0	0	0	0	0	0	0	0	0	0	0	0	
67	District Social Security Officer DSSO	0	0	0	0	0	0	0	0	0	0	0	0	0	0	0	0	
68	Finance	0	0	0	0	0	0	0	0	0	0	0	1	0	0	0	0	
	Total	20	81	221	99	1	13	56	27	25	119	238	168	12	193	709	673	
Total		Grant Total	234	638	2041	434	53	124	349	178	357	600	1159	637	198	757	3148	1984

Table 08

Distribution of SCs, BCs, Ex-Servicemen, Wards of Freedom Fighters, Handicapped, Terrorist affected and Compassionate ground employees out of total posts filled in Pb. Govt. services as on 31st March: 2016

Date : 22-Mar-2018										
Sr. No	Parameter Name	Group A	Group A (%) With Total Filled Posts	Group B	Group B (%) With Total Filled Posts	Group C	Group C (%) With Total Filled Posts	Group D	Group D (%) With Total Filled Posts	Total
1	Total Sanctioned Posts	41775	0.00	79098	0.00	183670	0.00	64466	0.00	369009
2	Filled Post	29326	0.00	56920	0.00	144699	0.00	45703	0.00	276648
3	General Castes	20751	70.76	34693	60.95	79600	55.01	19190	41.99	154234
4	Scheduled Castes	5387	18.37	13465	23.66	36796	25.43	17777	38.90	73425
5	BackWard Classes	2346	8.00	6643	11.67	21689	14.99	5987	13.10	36665
6	Ex-Serviceman	234	0.80	638	1.12	2041	1.41	434	0.95	3347
7	Wards of Freedom Fighters	53	0.18	124	0.22	349	0.24	178	0.39	704
8	Handicapped	357	1.22	600	1.05	1159	0.80	637	1.39	2753
9	Compassionate Ground	198	0.68	757	1.33	3148	2.18	1984	4.34	6087

Table 09
District-wise No. of Punjab Government Employees-Appointed, Retired, and Likely to Retired to Next Year as on 31st March: 2016

Date : 22-Mar-2018					
Sr.No	District Name	Appointed During Current Financial Year	Retired During Current Financial Year	Pensioners as on Current Financial Year	Likely Retire to During Next Year
1	Amritsar	173	387	6	508
2	Bathinda	309	393	393	531
3	Faridkot	80	87	82	85
4	Fatehgarh Sahib	38	129	33	93
5	Firozpur	202	276	307	303
6	Gurdaspur	121	249	100	244
7	Hoshiarpur	13	204	177	11
8	Jalandhar	0	11	0	0
9	Kapurthala	113	212	133	202
10	Ludhiana	123	395	1289	226
11	Mansa	154	133	79	198
12	Moga	35	126	185	81
13	Sri Mukutsar Sahib	34	134	134	134
14	SBS Nagar	64	114	114	78
15	Patiala	380	528	1593	529
16	Rupnagar	102	209	158	258
17	Sangrur	178	374	5661	330
18	SAS Nagar	110	180	680	220
19	Barnala	291	146	164	161
20	Tarn Taran	189	95	94	135
21	Fazilka	16	55	77	49
22	Pathankot	909	22	29	36
23	Chandigarh	368	475	454	484
	Total	4002	4934	11942	4896

BOX-6: Department-wise distribution of Government Employees.

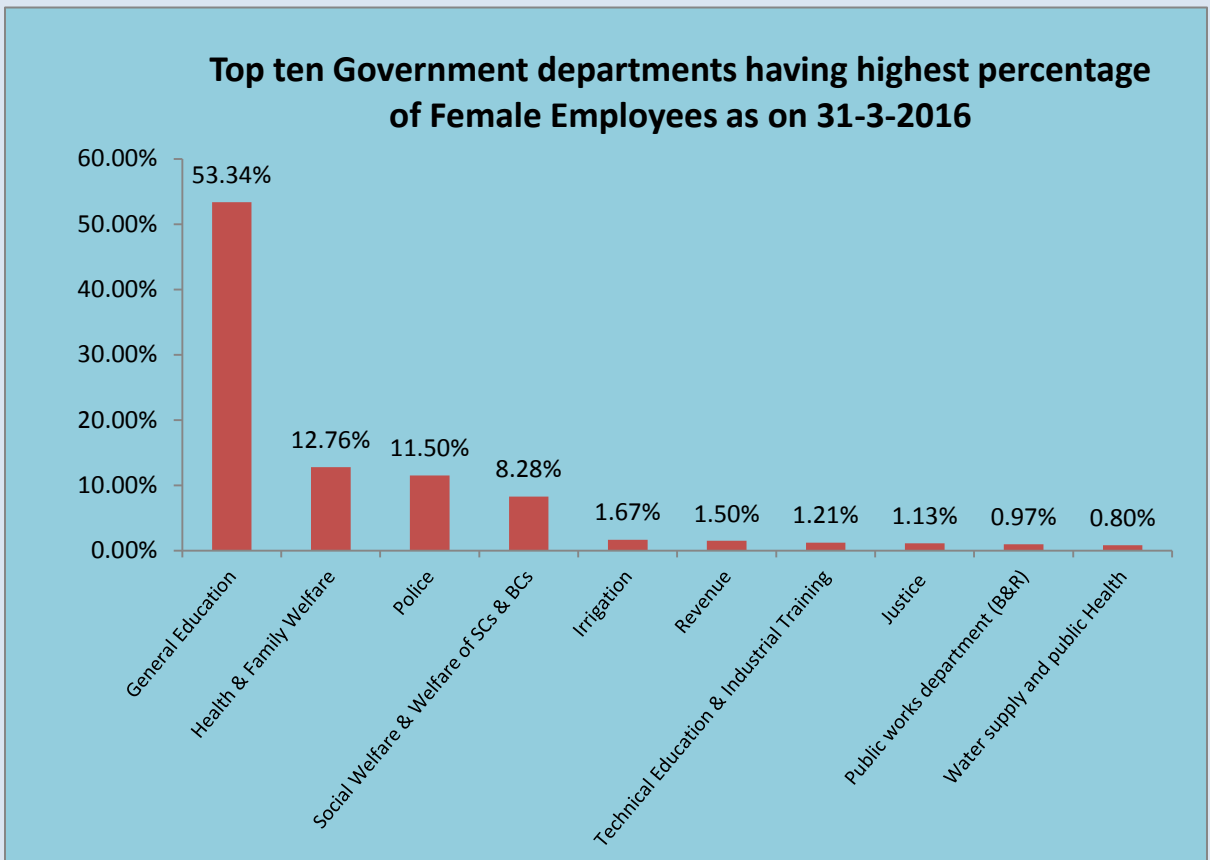
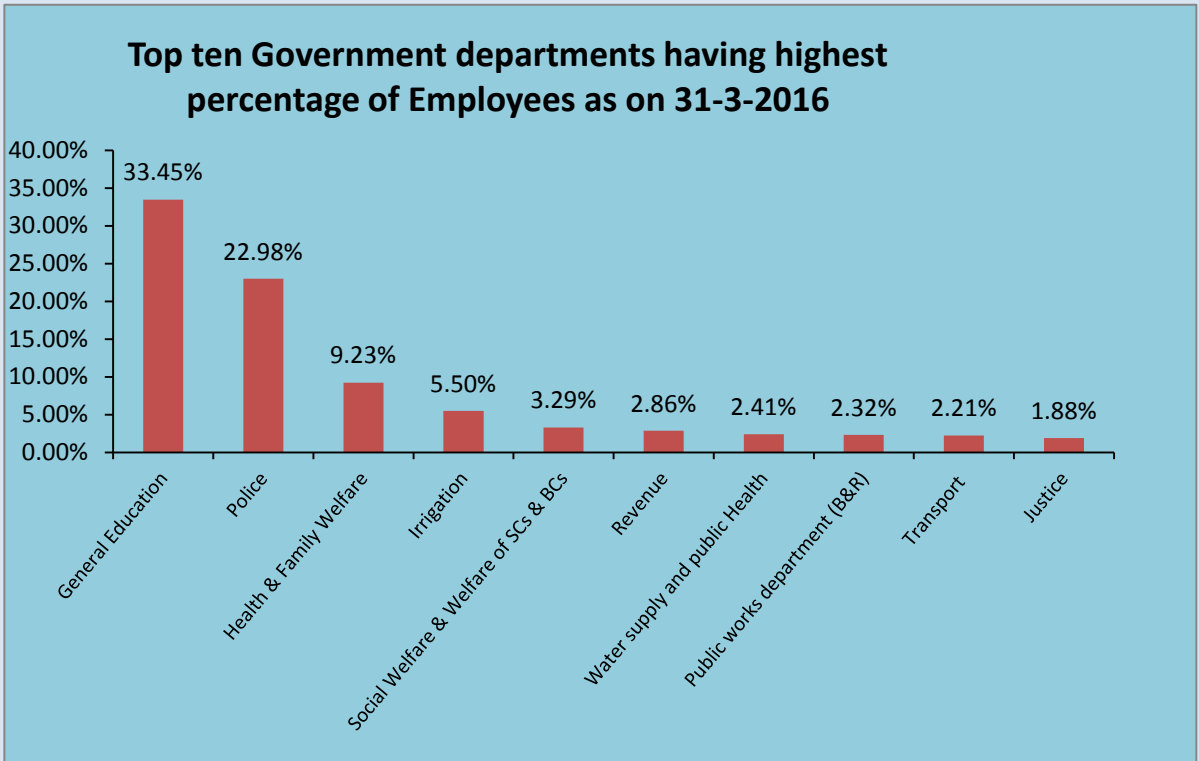


Table 10
Department-wise No. of Punjab Govt. employees-Employed, Retired and availed/likely to be availed
Pension during the year as on 31st March: 2016

Date : 22-Mar-2018					
Sr.No	Department Name	Appointed During Current Financial Year	Retired During Current Financial Year	Pensioners as on Current Financial Year	Likely Retire to During Next Year
1	Pb Vidhan Sabha	10	5	5	3
2	Pb. Raj Bhawan	0	0	0	0
3	Legal Remembrancer	2	5	5	4
4	Advocate General	28	2	0	8
5	Prosecution & Litigation	63	14	46	9
6	Justice	245	72	319	60
7	Election	62	7	60	9
8	Language	1	9	22	11
9	Financial Commissioner	0	0	0	0
10	Revenue	168	196	603	161
11	Excise & Taxation	12	49	121	54
12	Punjab Public Service Commission	18	10	11	2
13	Civil Secretariate	72	94	0	76
14	Police	1249	757	1661	635
15	Home Guard	4	19	106	10
16	Jails	93	52	588	45
17	Treasury & Accounts	4	15	144	17
18	Local Fund Examiner	4	17	19	10
19	Controller Internal Audit	0	10	33	11
20	Institutional Finance & Banking	0	1	1	2
21	Printing & Stationary	11	22	32	51
22	Local Government	19	3	0	8
23	Subordinate Services Board	0	0	0	0
24	General Education	518	1284	3701	1434
25	Technical Education & Industrial Training	68	57	220	55
26	Sports	11	6	103	6
27	Youth Services	2	0	7	0

Table 10
Department-wise No. of Punjab Govt. employees-Employed, Retired and availed/likely to be availed
Pension during the year as on 31st March: 2016

Date : 22-Mar-2018					
Sr.No	Department Name	Appointed During Current Financial Year	Retired During Current Financial Year	Pensioners as on Current Financial Year	Likely Retire to During Next Year
28	Cultural Affaires Museum Archaeology & Archives	2	13	35	17
29	Health & Family Welfare	481	502	897	560
30	Water Supply Public Health	102	239	394	212
31	Town & Country Planning	31	9	25	11
32	Chief Architect	1	9	4	6
33	Information & Publicity	2	7	22	6
34	Social Welfare & Welfare of SCs & BCs	45	59	126	51
35	Labour	3	16	50	4
36	Employment	1	9	23	10
37	Subordinate Services Selection Board	0	0	0	0
38	Sainik Welfare	0	4	11	3
39	Hospitality	0	2	2	7
40	Rehabilitation	0	0	0	0
41	Administrative General Official Trustee & Charitab	0	0	0	1
42	Information Technology	0	0	1	0
43	Agriculture	45	81	165	61
44	Horticulture	6	19	55	25
45	Soil Conservation	9	52	148	39
46	Animal Husbandary	69	125	324	132
47	Dairy Development	1	8	28	9
48	Fisheries	0	10	41	12
49	Forest	131	41	108	56
50	Cooperation	18	88	142	55
51	Rural Dev. & Panchayats	39	61	74	58
52	Consolidation	0	0	0	0
53	Colonization	4	8	4	6
54	Irrigation	106	342	512	383

Table 10
Department-wise No. of Punjab Govt. employees-Employed, Retired and availed/likely to be availed
Pension during the year as on 31st March: 2016

Date : 22-Mar-2018					
Sr.No	Department Name	Appointed During Current Financial Year	Retired During Current Financial Year	Pensioners as on Current Financial Year	Likely Retire to During Next Year
55	Chief Electrical Inspector	0	2	1	1
56	Industries	7	21	58	31
57	Transport	106	193	169	225
58	Civil Aviation	0	0	2	2
59	Public Works Deptt. B&R	56	229	424	175
60	Tourism	0	1	1	0
61	ESO Punjab	6	4	38	7
62	Food Civil Supplies & Consumer Affairs	67	70	204	45
63	Punjab State Planning Board	0	2	47	3
64	Lotteries & Small Savings	0	2	0	2
65	Lok Pal	0	0	0	0
66	Pensioners & Welfare of Pensioners	0	0	0	0
67	District Social Security Officer DSSO	0	0	0	0
68	Finance	0	0	0	0
	Total	4002	4934	11942	4896

BOX-7: Estimated Expenditure on Salaries of Government

Employees according to pay-scales

Top Five Pay-scales in which highest Expenditure (esitmated) incurred on salary

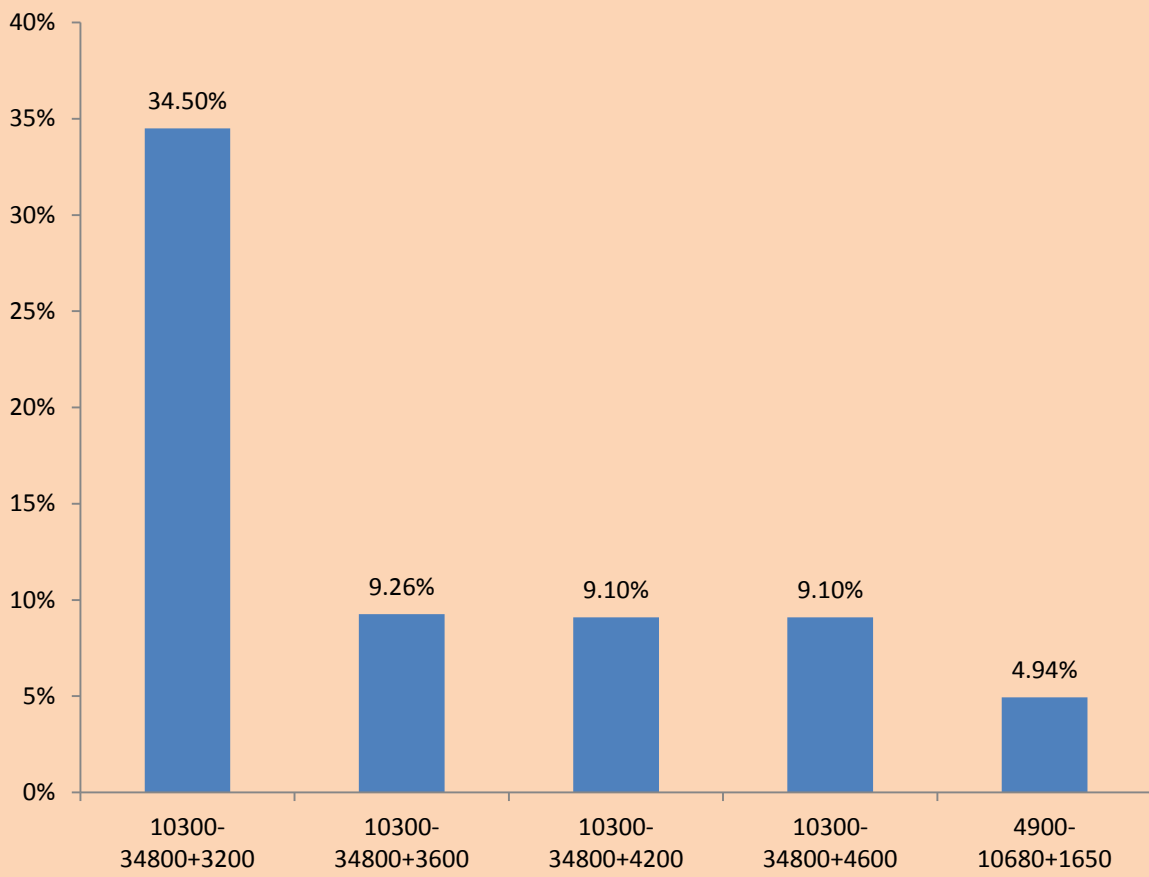


Table 11

Estimated Expenditure on Salries of Punjab Govt. Employee according to PayScale during the year as on 31st March: 2016

Date : 11-Apr-2018												
Sr.No	Pay Scale Name	Total Employee	Total Basic Pay (Rs.000)	Total Dearness Allowance (Rs.000)	House Rent Allowance (Rs.000)	Total Medical Allowance (Rs.000)	Total Monthly Salary (Rs.000)	Total Annually Salary (Rs.000)	Total Annually Salary by District (Rs.000)	Monthly Expenditure Per Employee (Rs.000)	%age to Total	Annually Expenditure Per Employee (Rs.000)
1	2	3	5	6		7	8	9	10	11	12	13
1	10300-34800+5000	13364	334768	356963	0	6682	698413	8380956	1724775	52	5.51	627
2	10300-34800+5400	4374	110443	117765	0	2187	230395	2764740	1013400	53	1.82	632
3	15600-39100+5400	3549	106647	113718	0	1775	222140	2665680	1426202	63	1.75	751
4	15600-39100+5700	299	9029	9628	0	150	18807	225684	103273	63	0.15	755
5	15600-39100+6000	677	20546	21908	0	339	42793	513516	128766	63	0.34	759
6	15600-39100+6600	1808	55415	59089	0	904	115408	1384896	678924	64	0.91	766
7	15600-39100+7000	42	1295	1381	0	21	2697	32364	13034	64	0.02	771
8	15600-39100+7400	317	9842	10495	0	159	20496	245952	129031	65	0.16	776
9	15600-39100+7600	495	15419	16441	0	248	32108	385296	144992	65	0.25	778
10	15600-39100+7800	714	22312	23791	0	357	46460	557520	597640	65	0.37	781
11	15600-39100+8000	33	1034	1103	0	17	2154	25848	22000	65	0.02	783
12	15600-39100+8200	10	314	335	0	5	654	7848	3803	65	0.01	785
13	15600-39100+8400	331	10443	11135	0	166	21744	260928	45740	66	0.17	788
14	37400-67000+8600	1612	91078	97116	0	806	189000	2268000	1423503	117	1.49	1407
15	37400-67000+8700	212	11988	12783	0	106	24877	298524	171944	117	0.20	1408
16	37400-67000+8800	75	4245	4526	0	38	8809	105708	2204	117	0.07	1409
17	37400-67000+8900	133	7534	8034	0	67	15635	187620	74834	118	0.12	1411
18	37400-67000+9000	212	12020	12817	0	106	24943	299316	217298	118	0.20	1412
19	37400-67000+10000	268	15329	16345	0	134	31808	381696	160588	119	0.25	1424
20	Any Other	801	30103	32099	0	401	62603	751236	691174	78	0.49	938
21	10300-34800+3800	2658	64988	69297	0	1329	135614	1627368	504670	51	1.07	612
22	10300-34800+4200	22413	552480	589109	0	11207	1152796	13833552	6861631	51	9.10	617
23	10300-34800+4400	18202	450499	480367	0	9101	939967	11279604	5616186	52	7.42	620
24	10300-34800+4600	6698	166445	177480	0	3349	347274	4167288	2396753	52	2.74	622
25	10300-34800+4800	4625	115393	123044	0	2313	240750	2889000	1152595	52	1.90	625
26	10300-34800+5000	1424	35671	38036	0	712	74419	893028	289949	52	0.59	627
27	Any Other	900	22304	23783	0	450	46537	558444	70847	52	0.37	620
28	5910-20200+1900	4377	61299	65363	0	2189	128851	1546212	690827	29	1.02	353

Table 11

Estimated Expenditure on Salries of Punjab Govt. Employee according to PayScale during the year as on 31st March: 2016

29	5910-20200+1950	1473	20666	22036	0	737	43439	521268	147944	29	0.34	354
30	5910-20200+2000	1779	25003	26661	0	890	52554	630648	72048	30	0.41	354
31	5910-20200+2400	8704	124075	132301	0	4352	260728	3128736	1248673	30	2.06	359
32	5910-20200+2800	5195	75093	80072	0	2598	157763	1893156	595542	30	1.25	364
33	5910-20200+3000	2508	36503	38923	0	1254	76680	920160	700594	31	0.61	367
34	10300-34800+3200	86728	2094481	2233345	0	43364	4371190	52454280	15638845	50	34.50	605
35	10300-34800+3600	23094	562338	599621	0	11547	1173506	14082072	4872005	51	9.26	610
36	10300-34800+3800	2575	62958	67132	0	1288	131378	1576536	2396615	51	1.04	612
37	10300-34800+4200	3700	91205	97252	0	1850	190307	2283684	1185220	51	1.50	617
38	10300-34800+4400	373	9231	9843	0	187	19261	231132	642564	52	0.15	620
39	10300-34800+4600	93	2311	2464	0	47	4822	57864	192914	52	0.04	622
40	10300-34800+4800	1	24	26	0	1	51	612	2379	51	0.00	612
41	Any Other	4182	81164	86545	0	2091	169800	2037600	153107	41	1.34	487
42	4900-10680+1300	3404	28729	30634	0	1702	61065	732780	892416	18	0.48	215
43	4900-10680+1400	3868	32839	35016	0	1934	69789	837468	430011	18	0.55	217
44	4900-10680+1650	34186	294512	314038	0	17093	625643	7507716	3865039	18	4.94	220
45	Any Other	4729	40267	42937	0	2365	85569	1026828	707934	18	0.68	217
46	1-5000	10768	26920	28705	0	5384	61009	732108	207617	6	0.48	68
47	5001-10000	8269	62017	66129	0	4135	132281	1587372	423242	16	1.04	192
48	10000 & Above	8337	41685	44449	0	4169	90303	1083636	1016708	11	0.71	130
49	Any Other	1211	6055	6456	0	606	13117	157404	11516	11	0.10	130
	Total	305800	6056959	6458536	0	152912	12668407	152020884	61759516	41	100	497

BOX-8: Distribution of Semi-Government Employees

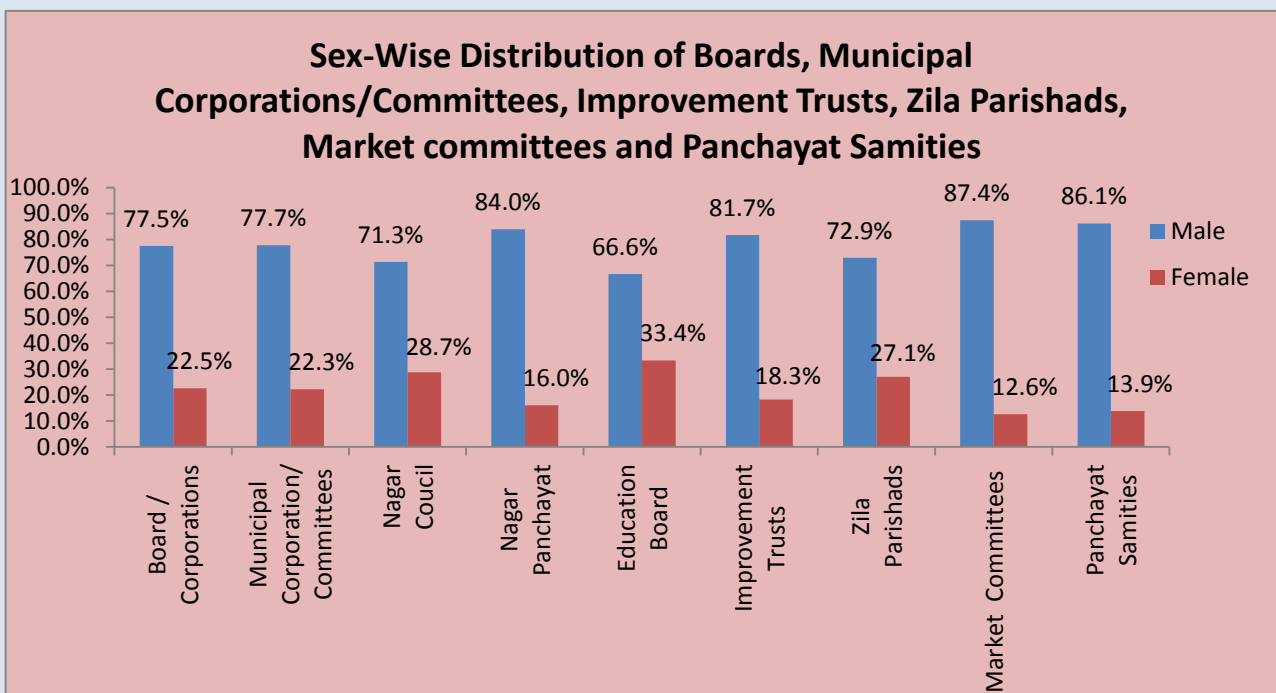
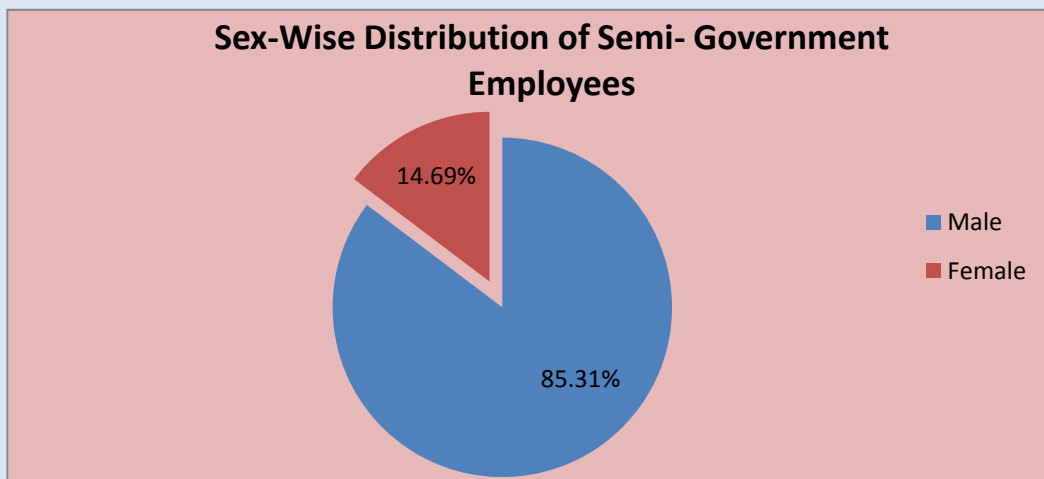
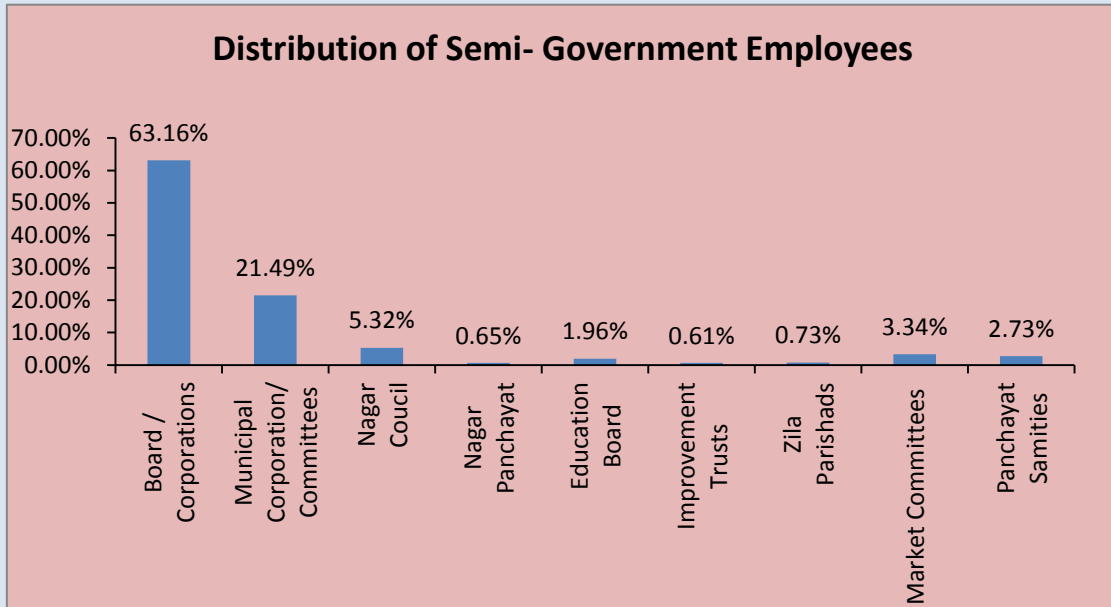


Table 01**Pay Scale-wise No. of Semi-Government Employees working in Boards/Corporations/Municipal Corporations/Municipal Committees/Improvement Trusts/Zila Parishads/Market Committees/Panchayat Samities as on 31st March: 2016**

Sr.No	Pay Scale in Rs.	Boards/ Corporation s	Municipal Corporation s/ Committees	Nagar Council	Nagar Panchayat	Education Board	Improvement Trusts	Zila Parishads	Market Committees	Panchayat Samities	Total	Grand Total	Percentage to Total
1	4900-10680+1300	102	772	166	11	78	4	2	44	55	1132	1234	1.41
2	4900-10680+1400	32	501	50	0	0	0	1	36	25	613	645	0.74
3	4900-10680+1650	4678	10370	2240	204	285	237	169	567	207	14279	18957	21.67
4	5910-20200+1900	1279	2663	787	36	72	21	56	260	52	3947	5226	5.97
5	5910-20200+1950	3874	363	83	3	0	2	5	48	36	540	4414	5.04
6	5910-20200+2000	1066	26	29	0	0	2	1	8	11	77	1143	1.31
7	5910-20200+2400	1076	444	151	20	92	24	11	44	13	799	1875	2.14
8	5910-20200+2800	362	160	57	1	0	6	1	7	10	242	604	0.69
9	5910-20200+3000	192	107	35	3	0	39	3	8	70	265	457	0.52
10	10300-34800+3200	15790	1550	384	156	504	79	29	655	1555	4912	20702	23.66
11	10300-34800+3600	9957	638	284	47	0	5	37	272	47	1330	11287	12.90
12	10300-34800+3800	3052	36	15	4	0	2	3	388	14	462	3514	4.02
13	10300-34800+4200	1468	191	62	9	0	4	5	326	118	715	2183	2.49
14	10300-34800+4400	1836	434	139	35	192	30	12	174	27	1043	2879	3.29
15	10300-34800+4600	696	78	15	8	0	13	2	44	7	167	863	0.99
16	10300-34800+4800	1164	217	91	22	0	19	15	21	102	487	1651	1.89
17	10300-34800+5000	3000	26	5	0	0	3	3	12	12	61	3061	3.50
18	10300-34800+5400	643	49	20	3	490	16	145	4	3	730	1373	1.57
19	15600-39100+5400	2399	61	11	2	0	15	135	1	4	229	2628	3.00
20	15600-39100+5700	277	2	1	1	0	0	0	0	2	6	283	0.32
21	15600-39100+6000	514	13	1	0	0	0	0	0	0	14	528	0.60
22	15600-39100+6600	692	21	17	2	0	7	1	0	1	49	741	0.85
23	15600-39100+7400	16	2	1	0	0	0	0	0	5	8	24	0.03
24	15600-39100+7600	88	36	5	0	0	6	0	0	0	47	135	0.15
25	15600-39100+7800	44	2	0	0	0	0	0	0	4	6	50	0.06
26	15600-39100+8200	10	12	0	0	0	0	2	0	3	17	27	4.85
27	15600-39100+8400	117	3	0	0	0	0	0	0	1	4	121	0.14

Table 01**Pay Scale-wise No. of Semi-Government Employees working in Boards/Corporations/Municipal Corporations/Municipal Committees/Improvement Trusts/Zila Parishads/Market Committees/Panchyat Samities as on 31st March: 2016**

28	37400-6700+8600	536	9	4	0	0	0	3	0	5	21	557	0.64
29	37400-6700+8700	41	12	4	0	0	2	0	0	3	21	62	0.07
30	37400-6700+8800	14	2	0	0	0	0	0	0	0	2	16	0.02
31	37400-6700+8900	192	0	1	0	0	0	1	0	0	2	194	0.22
32	37400-6700+10000	61	2	1	0	0	0	0	0	0	3	64	0.07
Total		55268	18802	4659	567	1713	536	642	2919	2392	32230	87498	100

BOX-9: Reservation Position in Semi-Government Employees

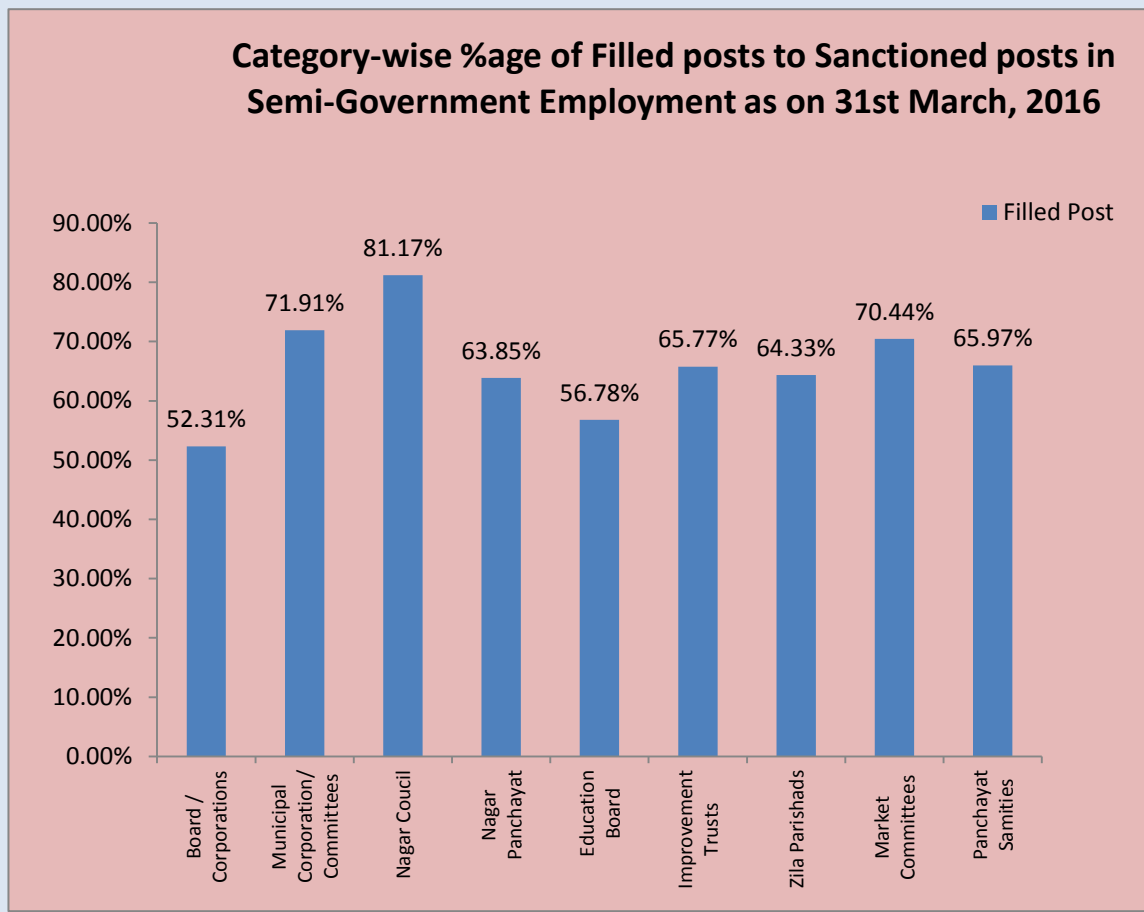
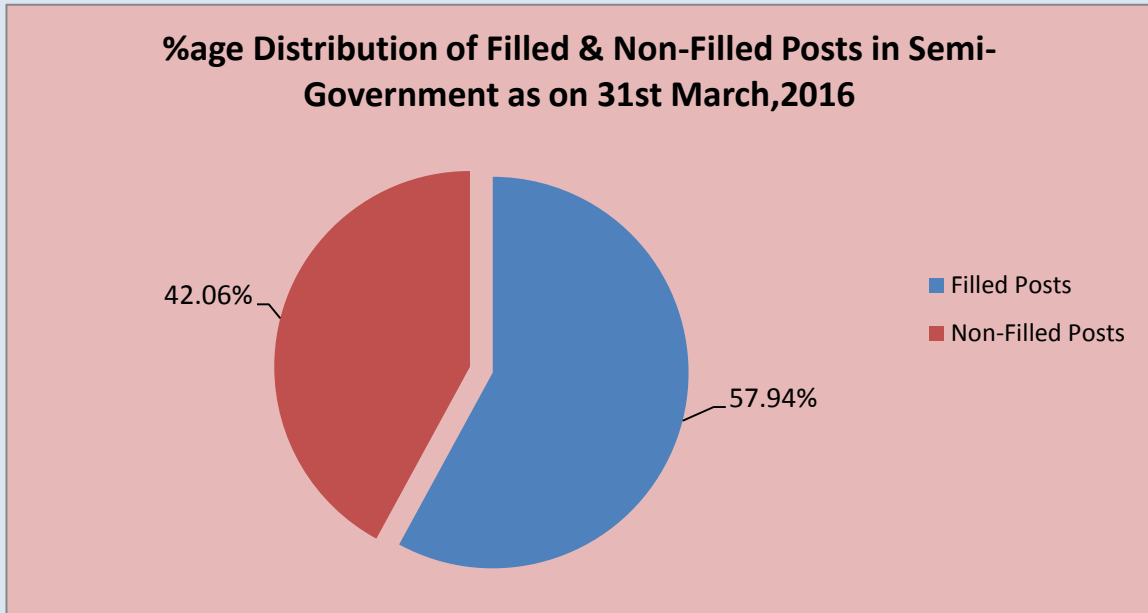


Table 02

Scheduled Castes, Backward Classes, Ex-Serviceman, Wards of Freedom Fighter, Handicapped, Compassionate Ground Employees Working in Boards/Corporations, Muncipal Corporations/Committees, Improvement Trusts, Market Committees, Zila Parisads, Panchayat Samities as on 31st March: 2016

Sr.No	Parameter Name	Boards /Corporations	Muncipal Corporations /Committees	Nagar Council	Nagar Panchayat	Education Board	Improvement Trusts	Zila Parishads	Market Committees	Panchayat Samities	Total	Grand Total	%age to Total Filled Post
1	Sanctioned Posts	105650	26148	5740	888	3017	815	998	4144	3626	45376	151026	51
2	Filled Posts	55268	18802	4659	567	1713	536	642	2919	2392	32230	87498	37
3	Male	49571	14616	3321	476	1141	438	468	2552	2060	25072	74643	28
4	Female	5697	4186	1338	91	572	98	174	367	332	7158	12855	8
5	General Category	33725	4792	1106	232	538	291	293	1512	1343	10107	43832	11
6	Scheduled Castes	12378	11845	2698	228	619	147	213	702	471	16923	29301	19
7	Backward Castes	6109	1606	414	65	556	67	62	312	242	3324	9433	4
8	Ex-Servicemen	183	54	13	2	0	4	3	18	31	125	308	0
9	Wards of Freedom Fighters	109	62	5	1	0	2	10	12	12	104	213	0
10	Handicapped	406	138	96	15	0	10	33	35	117	444	850	1
11	Compassionate Ground	2358	318	327	24	0	15	28	328	176	1216	3574	1
12	Appointed During Current Year	46	24	11	23	0	1	0	9	18	86	132	0
13	Retired During Current Year	678	373	150	13	2	21	7	195	32	793	1471	1
14	Likely to Retired During Next Year	61	124	13	0	0	17	1	19	13	187	248	0
15	Pensioners During Retired Current Year	300	1716	1576	123	0	66	26	1643	132	5282	5582	6

Table 03
District-wise No. of Semi-Government Employees working in Municipal Corporations/Committees as on 31st March: 2016

Sr.No	District Name	Sanctioned Posts	Filled Posts			General Category	Scheduled Castes	Backward Classes	Ex-Service men	Wards of Freedom Fighters	Handicapped	Compassionate Ground	Appointed During Current Year	Retired During Current Year	Likely Retired During Next Year	Pensioners Current Year
			Male	Female	Total											
1	Amritsar	5248	3371	953	4324	1629	2245	417	4	3	14	12	2	64	69	2
2	Bathinda	1330	681	271	952	138	775	27	12	0	0	0	0	0	0	0
3	Faridkot	548	378	100	478	85	369	12	1	0	7	4	0	49	5	17
4	Fatehgarh Sahib	0	0	0	0	0	0	0	0	0	0	0	0	0	0	0
5	Firozepur	0	0	0	0	0	0	0	0	0	0	0	0	0	0	0
6	Gurdaspur	791	576	138	714	252	234	94	6	0	17	124	0	18	2	18
7	Hoshiarpur	623	301	60	361	254	86	12	2	4	0	3	17	2	0	22
8	Jalandhar	966	354	231	585	114	152	319	0	0	0	0	0	0	0	0
9	Kapurthala	1492	442	166	608	126	459	19	2	0	2	0	0	9	0	45
10	Ludhiana	8912	5344	1296	6640	1164	4929	470	0	0	37	40	0	127	0	296
11	Mansa	225	137	47	184	39	128	9	0	0	5	3	0	1	0	0
12	Moga	1023	366	182	548	60	450	0	16	2	6	14	0	10	0	236
13	Sri Muktsar Sahib	497	353	105	458	110	270	18	1	0	8	51	0	10	0	74
14	SBS Nagar	0	0	0	0	0	0	0	0	0	0	0	0	0	0	0
15	Patiala	1539	862	289	1151	327	747	40	0	0	14	23	0	41	48	621
16	Rupnagar	564	256	86	342	159	123	50	2	0	8	0	1	9	0	191
17	Sangrur	0	0	0	0	0	0	0	0	0	0	0	0	0	0	0
18	SAS Nagar	1119	291	68	359	115	197	15	1	0	9	22	0	6	0	6
19	Barnala	0	0	0	0	0	0	0	0	0	0	0	0	0	0	0
20	Tarn Taran	202	144	43	187	34	135	12	0	4	2	0	4	4	0	1
21	Fazilka	617	375	105	480	122	314	44	0	0	0	0	0	23	0	187
22	Pathankot	452	385	46	431	64	232	48	7	49	9	22	0	0	0	0
23	Chandigarh	0	0	0	0	0	0	0	0	0	0	0	0	0	0	0
Total		26148	14616	4186	18802	4792	11845	1606	54	62	138	318	24	373	124	1716

Table 04
District-wise No. of Semi-Government Employees working in Improve Trusts as on 31st
March: 2016

Sr.No	District Name	Sanctioned Posts	Filled Posts			General Category	Scheduled Castes	Backward Classes	Ex-Service men	Wards of Freedom Fighters	Handi capped	Compassionate Ground	Appointed During Current Year	Retired During Current Year	Likely Retired During Next Year	Pensioners Current Year
			Male	Female	Total											
1	Amritsar	190	126	35	161	125	20	10	1	1	4	0	0	9	12	0
2	Bathinda	52	20	6	26	17	5	4	0	0	0	0	0	0	0	0
3	Faridkot	0	0	0	0	0	0	0	0	0	0	0	0	0	0	0
4	Fatehgarh Sahib	0	0	0	0	0	0	0	0	0	0	0	0	0	0	0
5	Ferozepur	0	0	0	0	0	0	0	0	0	0	0	0	0	0	0
6	Gurdaspur	0	0	0	0	0	0	0	0	0	0	0	0	0	0	0
7	Hoshiarpur	22	13	1	14	2	10	1	0	0	1	0	1	1	0	9
8	Jalandhar	34	10	6	16	4	5	7	0	0	0	0	0	2	0	0
9	Kapurthala	73	16	6	22	13	8	1	0	0	0	0	0	3	0	6
10	Ludhiana	208	133	17	150	66	52	29	0	0	1	2	0	3	0	0
11	Mansa	0	0	0	0	0	0	0	0	0	0	0	0	0	0	0
12	Moga	15	9	1	10	2	5	1	0	0	0	2	0	0	0	7
13	Sri Muktsar Sahib	0	0	0	0	0	0	0	0	0	0	0	0	0	0	0
14	SBS Nagar	3	1	0	1	1	0	0	0	0	0	0	0	0	0	0
15	Patiala	103	53	10	63	34	16	6	0	0	0	7	0	2	2	21
16	Rupnagar	29	14	4	18	9	7	2	0	0	0	0	0	0	3	3
17	Sangrur	27	13	2	15	7	4	0	1	0	2	1	0	0	0	15
18	SAS Nagar	0	0	0	0	0	0	0	0	0	0	0	0	0	0	0
19	Barnala	23	14	1	15	5	8	1	0	0	0	1	0	0	0	0
20	Tarn Taran	2	2	0	2	2	0	0	0	0	0	0	0	0	0	0
21	Fazilka	14	3	1	4	1	2	1	0	0	0	0	0	1	0	5
22	Pathankot	20	11	8	19	3	5	4	2	1	2	2	0	0	0	0
23	Chandigarh	0	0	0	0	0	0	0	0	0	0	0	0	0	0	0
Total		815	438	98	536	291	147	67	4	2	10	15	1	21	17	66

Table 05

District-wise No. of Semi-Government Employees working in Zila Parishads as on 31st March: 2016

Sr.No	District Name	Sanctio ned Posts	Filled Posts			General Categor y	Schedule d Castes	Backward Classes	Ex- Service men	Wards of Freedom Fighters	Handic apped	Compassi onate Ground	Appointed During Current Year	Retired During Current Year	Likely Retired During Next Year	Pension ers Current Year
			Male	Female	Total											
1	Amritsar	103	54	9	63	17	17	19	0	9	0	1	0	0	0	0
2	Bathinda	21	8	1	9	7	1	1	0	0	0	0	0	0	0	0
3	Faridkot	35	20	6	26	18	3	3	0	0	1	1	0	0	0	0
4	Fatehgarh Sahib	44	24	9	33	18	12	0	1	0	0	2	0	0	0	0
5	Firozpur	61	22	5	27	7	14	3	0	0	3	0	0	0	0	0
6	Gurdaspur	0	0	0	0	0	0	0	0	0	0	0	0	0	0	0
7	Hoshiarpur	22	7	3	10	4	3	1	0	1	1	0	0	1	0	2
8	Jalandhar	27	2	1	3	1	1	1	0	0	0	0	0	0	0	0
9	Kapurthala	13	4	3	7	1	1	3	0	0	2	0	0	0	0	0
10	Ludhiana	168	107	54	161	68	68	14	0	0	11	0	0	5	0	8
11	Mansa	45	17	5	22	20	2	0	0	0	0	0	0	0	0	0
12	Moga	86	31	12	43	23	9	3	0	0	3	5	0	0	0	0
13	Sri Mukutsar Sahib	69	29	9	38	15	10	4	0	0	4	5	0	0	0	2
14	SBS Nagar	64	40	9	49	14	30	0	0	0	4	1	0	0	0	0
15	Patiala	19	7	5	12	3	4	0	0	0	1	4	0	1	0	6
16	Rupnagar	54	18	3	21	10	9	1	0	0	1	0	0	0	1	1
17	Sangrur	23	12	4	16	5	3	2	0	0	0	6	0	0	0	7
18	SAS Nagar	65	30	24	54	29	16	3	2	0	2	2	0	0	0	0
19	Barnala	11	6	0	6	4	1	0	0	0	0	1	0	0	0	0
20	Tarn Taran	20	14	4	18	12	4	2	0	0	0	0	0	0	0	0
21	Fazilka	14	5	0	5	5	0	0	0	0	0	0	0	0	0	0
22	Pathankot	34	11	8	19	12	5	2	0	0	0	0	0	0	0	0
23	Chandigarh	0	0	0	0	0	0	0	0	0	0	0	0	0	0	0
Total		998	468	174	642	293	213	62	3	10	33	28	0	7	1	26

Table 06
District-wise No. of Semi-Government Employees Working in Market Committees as on 31st
March: 2016

Sr.No	District Name	Sanctioned Posts	Filled Posts			General Category	Scheduled Castes	Backward Classes	Ex-Service men	Wards of Freedom Fighters	Handicapped	Compassionate Ground	Appointed During Current Year	Retired During Current Year	Likely Retired During Next Year	Pensioners Current Year
			Male	Female	Total											
1	Amritsar	219	162	32	194	100	41	21	0	0	0	32	0	5	0	108
2	Bathinda	254	150	19	169	106	39	19	0	3	2	0	0	0	0	0
3	Faridkot	126	81	17	98	57	22	10	0	0	2	7	0	66	2	41
4	Fatehgarh Sahib	128	80	8	88	58	17	5	0	0	0	8	0	3	0	3
5	Firozpur	227	142	25	167	100	36	6	0	0	2	23	0	10	0	80
6	Gurdaspur	266	170	19	189	134	34	13	0	0	0	8	0	9	0	12
7	Hoshiarpur	129	73	9	82	40	26	7	0	0	2	7	2	4	1	74
8	Jalandhar	229	87	20	107	36	38	33	0	0	0	0	0	0	0	49
9	Kapurthala	145	79	8	87	49	28	8	2	0	0	0	0	10	0	64
10	Ludhiana	397	235	26	261	120	61	23	9	0	3	45	0	11	6	264
11	Mansa	139	86	11	97	67	23	6	0	0	1	0	0	8	0	0
12	Moga	217	147	20	167	83	38	15	1	0	5	25	0	5	0	122
13	Sri Muktsar Sahib	183	122	14	136	55	30	9	1	1	3	37	0	7	0	127
14	SBS Nagar	73	44	6	50	21	11	10	0	0	4	4	0	0	0	0
15	Patiala	313	224	25	249	102	61	33	0	0	4	49	3	12	10	170
16	Rupnagar	79	49	5	54	32	15	7	0	0	0	0	0	3	0	52
17	Sangrur	335	217	19	236	103	55	36	0	0	3	39	2	18	0	191
18	SAS Nagar	115	63	15	78	36	21	6	1	0	0	14	1	8	0	63
19	Barnala	114	78	10	88	46	18	8	0	0	1	15	1	5	0	74
20	Tarn Taran	207	114	29	143	83	37	12	0	0	1	10	0	0	0	1
21	Fazilka	215	128	18	146	76	44	20	1	5	0	0	0	11	0	148
22	Pathankot	34	21	12	33	8	7	5	3	3	2	5	0	0	0	0
23	Chandigarh	0	0	0	0	0	0	0	0	0	0	0	0	0	0	0
Total		4144	2552	367	2919	1512	702	312	18	12	35	328	9	195	19	1643

Table 07
District-wise No. of Semi-Government Employees Working in Panchayat Samities as on 31st
March: 2016

Sr.No	District Name	Sanctioned Posts	Filled Posts			General Category	Scheduled Castes	Backward Classes	Ex-Service men	Wards of Freedom Fighters	Handicapped	Compassionate Ground	Appointed During Current Year	Retired During Current Year	Likely Retired During Next Year	Pensioners Current Year
			Male	Female	Total											
1	Amritsar	285	235	28	263	161	38	28	7	1	12	16	0	0	0	0
2	Bathinda	148	106	12	118	95	12	10	0	0	1	0	0	0	0	0
3	Faridkot	49	40	4	44	28	6	1	1	0	0	8	0	0	0	0
4	Fatehgarh Sahib	117	76	7	83	41	23	6	1	0	3	9	0	0	0	0
5	Firozpur	153	98	5	103	51	24	7	0	0	7	14	0	0	0	0
6	Gurdaspur	362	232	38	270	166	36	25	1	1	20	21	0	3	3	0
7	Hoshiarpur	330	126	30	156	67	49	18	8	1	8	5	0	7	0	16
8	Jalandhar	128	52	10	62	29	19	13	0	0	1	0	0	0	0	2
9	Kapurthala	138	62	6	68	26	24	18	0	0	0	0	0	3	0	1
10	Ludhiana	263	91	57	148	62	34	21	0	1	7	23	2	2	2	4
11	Mansa	105	76	13	89	66	8	5	4	0	6	0	0	0	0	0
12	Moga	114	56	17	73	46	14	9	1	0	3	0	0	2	0	1
13	Sri Muktsar Sahib	91	64	7	71	43	14	4	2	3	5	0	0	1	0	4
14	SBS Nagar	139	33	12	45	10	19	9	2	0	0	5	0	0	0	0
15	Patiala	246	202	15	217	142	27	22	1	0	13	12	0	2	3	19
16	Rupnagar	159	61	8	69	39	23	4	0	0	3	0	0	1	0	0
17	Sangrur	205	134	18	152	76	28	9	0	2	10	27	0	3	0	78
18	SAS Nagar	113	49	13	62	31	14	4	0	0	7	6	0	1	0	1
19	Barnala	64	31	6	37	17	10	2	2	0	4	2	16	0	0	0
20	Tarn Taran	184	95	12	107	52	17	8	0	2	4	24	0	2	0	0
21	Fazilka	119	99	6	105	65	22	15	0	0	2	1	0	3	0	3
22	Pathankot	114	42	8	50	30	10	4	1	1	1	3	0	2	5	3
23	Chandigarh	0	0	0	0	0	0	0	0	0	0	0	0	0	0	0
Total		3626	2060	332	2392	1343	471	242	31	12	117	176	18	32	13	132

Table 08

District-wise No. of Semi-Government Employees working in Boards/Corporations as on 31st March: 2016

Sr.No	District Name	Sanctioned Posts	Filled Posts			General Category	Schedule d Castes	Backwar d Classes	Ex-Service men	Wards of Freedom Fighters	Handic apped	Compassi onate Ground	Appointed During Current Year	Retired During Current Year	Likely Retired During Next Year	Pension ers Current Year
			Male	Female	Total											
1	Amritsar	50	24	6	30	16	10	2	0	0	1	1	0	0	0	0
2	Bathinda	0	0	0	0	0	0	0	0	0	0	0	0	0	0	0
3	Faridkot	0	0	0	0	0	0	0	0	0	0	0	0	0	0	0
4	Fatehgarh Sahib	25	9	3	12	5	3	3	0	0	0	1	0	0	0	0
5	Firozpur	0	0	0	0	0	0	0	0	0	0	0	0	0	0	0
6	Gurdaspur	0	0	0	0	0	0	0	0	0	0	0	0	0	0	0
7	Hoshiarpur	0	0	0	0	0	0	0	0	0	0	0	0	0	0	0
8	Jalandhar	26	18	3	21	9	8	3	1	0	0	0	0	0	0	4
9	Kapurthala	0	0	0	0	0	0	0	0	0	0	0	0	0	0	0
10	Ludhiana	0	0	0	0	0	0	0	0	0	0	0	0	0	0	0
11	Mansa	0	0	0	0	0	0	0	0	0	0	0	0	0	0	0
12	Moga	0	0	0	0	0	0	0	0	0	0	0	0	0	0	0
13	Sri Muktsar Sahib	0	0	0	0	0	0	0	0	0	0	0	0	0	0	0
14	SBS Nagar	0	0	0	0	0	0	0	0	0	0	0	0	0	0	0
15	Patiala	0	0	0	0	0	0	0	0	0	0	0	0	0	0	0
16	Rupnagar	0	0	0	0	0	0	0	0	0	0	0	0	0	0	0
17	Sangrur	0	0	0	0	0	0	0	0	0	0	0	0	0	0	0
18	SAS Nagar	0	0	0	0	0	0	0	0	0	0	0	0	0	0	0
19	Barnala	0	0	0	0	0	0	0	0	0	0	0	0	0	0	0
20	Tarn Taran	0	0	0	0	0	0	0	0	0	0	0	0	0	0	0
21	Fazilka	0	0	0	0	0	0	0	0	0	0	0	0	0	0	0
22	Pathankot	50	30	12	42	15	10	5	5	2	2	3	0	0	0	0
23	Chandigarh	105499	49490	5673	55163	33680	12347	6096	177	107	403	2353	46	678	61	296
Total		105650	49571	5697	55268	33725	12378	6109	183	109	406	2358	46	678	61	300

Table 01
PayScale-Wise no of Employee Working in Aided Institutions
as on 31st March: 2016

Sr.No	Pay Scale Name	Parameter Value
1	4900-10680+1300	514
2	4900-10680+1400	365
3	4900-10680+1650	560
4	5910-20200+1900	252
5	5910-20200+1950	163
6	5910-20200+2000	90
7	5910-20200+2400	144
8	5910-20200+2800	153
9	5910-20200+3000	126
10	10300-34800+3200	363
11	10300-34800+3600	103
12	10300-34800+3800	58
13	10300-34800+4200	834
14	10300-34800+4400	278
15	10300-34800+4600	45
16	10300-34800+4800	42
17	10300-34800+5000	1096
18	10300-34800+5400	166
19	15600-39100+5400	31
20	15600-39100+5700	22
21	15600-39100+6000	401
22	15600-39100+6600	128
23	15600-39100+7400	255
24	15600-39100+7600	60
25	15600-39100+7800	74
26	15600-39100+8200	92
27	15600-39100+8400	26
28	37400-6700+8600	33
29	37400-6700+8700	51
30	37400-6700+8800	48
31	37400-6700+8900	776
32	37400-6700+10000	183
	Total	7532

BOX-10: Distribution of Employees in Aided Institutions

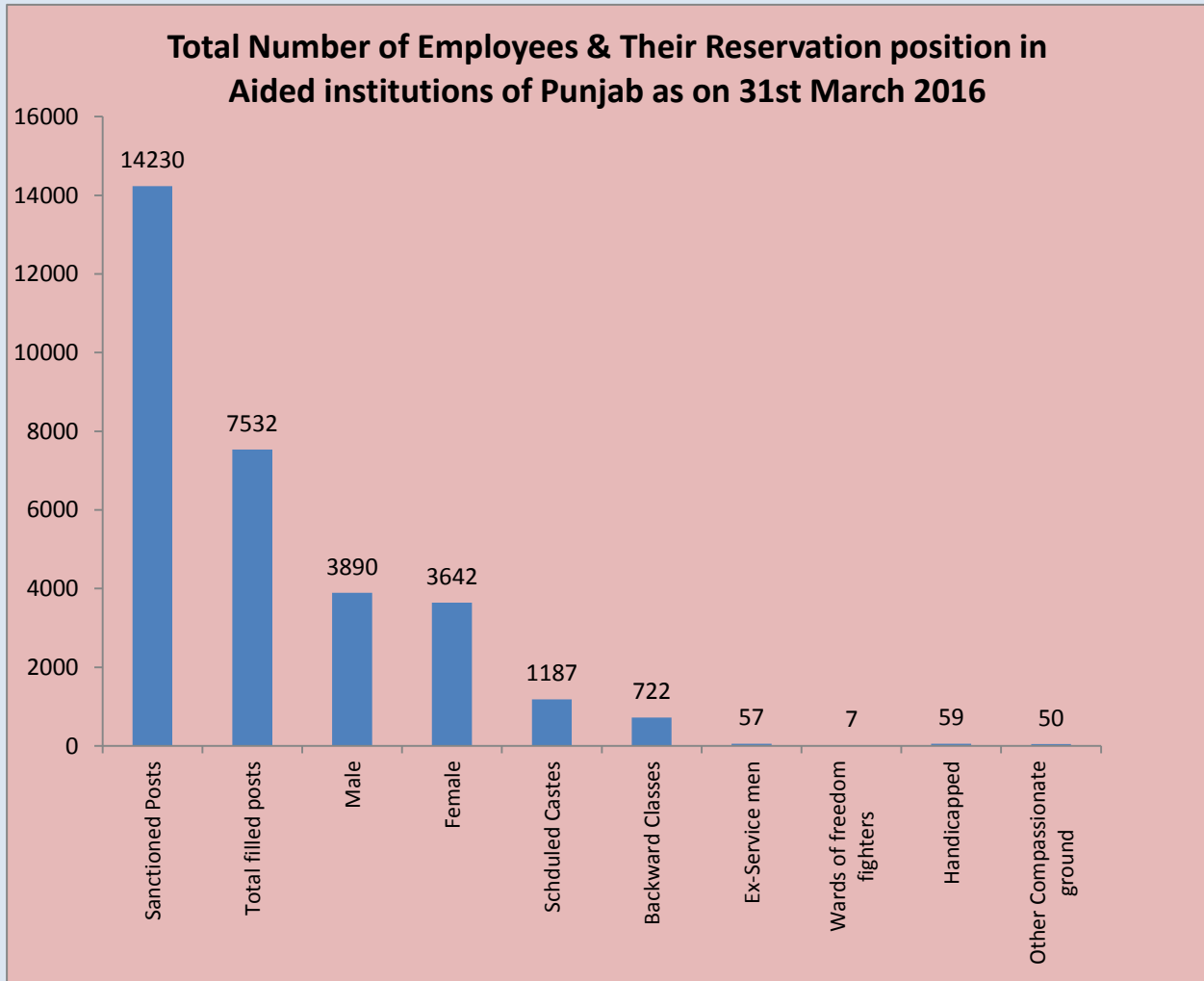


Table 02

PayScale-Wise no of Employee Working in Aided Institutions as on 31st March: 2016

Sr.No	District Name	Sanctioned Posts	Filled Posts			General Category	Scheduled Castes	Backward Classes	Ex-Servicemen	Wards of Freedom Fighters	Handicapped	Compassionate Ground	Appointed During Current Year	Retired During Current Year	Likely Retired During Next Year	Pensioners Current Year
			Male	Female	Total											
1	Amritsar	1734	524	432	956	796	105	36	6	0	10	3	0	36	3	14
2	Bathinda	539	73	109	182	164	10	8	0	0	0	0	0	5	8	13
3	Faridkot	137	17	37	54	49	5	0	0	0	0	0	0	0	1	7
4	Fatehgarh Sahib	191	52	40	92	76	11	5	0	0	0	0	0	6	0	5
5	Firozpur	569	200	135	335	273	32	27	0	0	3	0	0	15	0	4
6	Gurdaspur	418	113	83	196	134	23	38	1	0	0	0	0	4	0	12
7	Hoshiarpur	1114	354	385	739	475	151	68	14	2	28	1	3	39	0	23
8	Jalandhar	3038	896	919	1815	1017	517	267	6	0	3	5	0	7	0	44
9	Kapurthala	463	65	133	198	136	23	39	0	0	0	0	0	4	0	132
10	Ludhiana	1769	528	443	971	682	125	110	12	4	6	32	0	10	21	26
11	Mansa	109	14	35	49	42	3	3	0	0	1	0	0	2	0	0
12	Moga	515	99	137	236	183	21	21	10	0	1	0	7	18	0	41
13	Sri Muktsar Sahib	215	72	43	115	80	22	12	0	0	1	0	0	2	1	2
14	SBS Nagar	201	78	30	108	98	5	2	0	1	2	0	9	5	3	0
15	Patiala	1276	348	274	622	538	47	21	6	0	3	7	0	13	9	242
16	Rupnagar	387	106	82	188	154	21	13	0	0	0	0	3	3	0	142
17	Sangrur	531	107	110	217	180	17	17	1	0	1	1	1	15	0	369
18	SAS Nagar	235	43	46	89	69	9	10	0	0	0	1	0	3	0	26
19	Barnala	190	47	46	93	84	8	1	0	0	0	0	0	1	0	32
20	Tarn Taran	113	49	18	67	60	4	3	0	0	0	0	1	0	0	3
21	Fazilka	308	74	41	115	84	16	15	0	0	0	0	0	2	0	2
22	Pathankot	178	31	64	95	76	12	6	1	0	0	0	0	3	0	3
Total		14230	3890	3642	7532	5450	1187	722	57	7	59	50	24	193	46	1142